



Schedule of Services

December

Friday, December 3
8:00 PM
Erev Shabbat Service: New Member Shabbat

Saturday, December 4
9:00 AM Shabbat Morning Minyan

Friday, December 10
7:15 PM Erev Shabbat Family Chanukah Service

Saturday, December 11
9:00 AM Shabbat Morning Minyan
10:30 AM Bar Mitzvah of Spencer Lowry

Friday, December 17
6:30 PM Tot Shabbat
8:00 PM Erev Shabbat Service

Saturday, December 18
9:00 AM Shabbat Morning Minyan
10:30 AM Bat Mitzvah of Karen Gold

Friday, December 24
6:30 PM Kabbalat Shabbat Service

Saturday, December 25
9:00 AM Shabbat Morning Minyan

Friday, December 31
6:30 PM Kabbalat Shabbat Service

January

Saturday, January 1
9:00 AM Shabbat Morning Minyan

Friday, January 7
7:15 PM Erev Shabbat Family Service

Saturday, January 8
9:00 AM Shabbat Morning Minyan



Friday, January 14
8:00 PM Erev Shabbat Service

Saturday, January 15
9:00 AM Shabbat Morning Minyan
10:30 AM Bat Mitzvah of Sydney Mirth

Friday, January 21
6:00 PM Tot Shabbat (note earlier time)
7:00 PM Erev Shabbat Service
8:15 PM Shabbat Shira – Handel’s “Solomon”

Saturday, January 22
9:00 AM Shabbat Morning Minyan
10:00 AM WOTE/Sinai Minyan

Friday, January 28
6:30 PM Kabbalat Shabbat Service

Saturday, January 29
9:00 AM Shabbat Morning Minyan

Chanukah Blessing

Ba-ruch a-ta Adonai, E-lo-hei-nu
Me-lech ha-o-lam, a-sher
Kid'sha-nu b'mitz-vo-tav v'tzi-va-nu
L'had-lik ner shel Chanukah.

We praise You, Eternal God, Sovereign of the universe: You hallow us with Your Mitzvot, and command us to kindle the Chanukah lights.

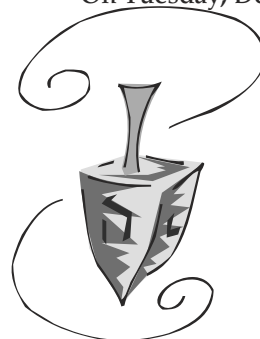
Ba-ruch a-ta Adonai, E-lo-hei-nu
Me-lech ha-o-lam, sheh-a-sa ni-seem
La-a-vo-tei-nu / l'I-mo-tei-nu
Ba-ya-meem ha-hem ba-z'man ha-zeh.

We praise you, Eternal God, Sovereign of the universe: You showed wonders to our fathers/mothers in days of old, at this season.

(on the first night only)
Ba-ruch a-ta Adonai, E-lo-hei-nu
Me-lech ha-o-lam, she-hecheyanu,
V'ki-y'manu, v'higi-anu
La-z'man hazeh.

We praise you, Eternal God, Sovereign of the universe, for giving us life, for sustaining us, and for enabling us to reach this season.

On Tuesday, December 14, 6:30 p.m., plan to be at Temple Emanu-El to light the Last Candle of Chanukah and to bring your Last Night Present for those less fortunate than we. We are luring you with the promise of Sufganiot (jelly donut holes). See the Rabbi's Message for details of this Tikkun Olam project.



From the Rabbi

Dedication and commitment are two of the most important ways we actualize our Jewish identity. In our families, in our synagogue, in our community, in our country and in our world we are given opportunities to demonstrate our sense of commitment. Being Jewish without commitment is to miss the essence of Judaism.

I think it is so wonderful that as we gear up for Chanukah this year we will be opening our new and improved school building on December 5. Just as Chanukah reminds us of the importance of commitment and re-dedication we will be re-dedicating ourselves to the future by opening our new school building.

Chanukah, though a minor holiday, is a time that we as American Jews light up our homes with the flame of loved ones near us and the spark of Tikkun Olam, repairing our world from its brokenness. Just as the Maccabees dedicated themselves to the religious freedom of our people, we must remember that without our religious freedom and the religious freedom of others we have nothing.

Chanukah has an additional meaning in our Jewish homes here in America. We show our love for each other by exchanging presents. Some give their children a gift each night after lighting the Chanukiah. Others may give just one gift. Why do we exchange gifts? Is this how we compensate for not having Christmas? I think that may be for some. For me it shows another way we can say to those people we love and cherish that we appreciate having them in our lives. In essence, we re-dedicate ourselves to our family and let them know we do not take them for granted.

There remains a missing piece. As important as it is to be thankful for one another, we also need to dedicate ourselves to those whose candles burn low or may already be extinguished. So, I invite you to start a new tradition at home. Instead of exchanging gifts on the last night, take the money you would have spent, buy a gift for a child in need or perform an act of Tzedakah as a family. On that eighth night let's show our appreciation for the gifts we have in our lives by giving to those who do not have. At the beginning of December a container will be available here at the Temple where you can drop off a toy for a needy child in our extended community. The Tikkun Olam/Social Action Committee will deliver these gifts to those without holiday gifts. I invite you to join us for this opportunity to celebrate a re-dedication as Jews.

May the light of the Chanukiah burn brightly within each of us as we commit ourselves to making this world a better place.



L'Shalom,
Rabbi Dana L. Magat

Brotherhood

Upcoming Events

As I write this article for the combined December/January issue of Connections, only about three weeks have passed since we mailed our annual request for your Brotherhood membership dues. Your response so far has been outstanding! But many of you are not providing your email addresses. In order to keep our expenses to a minimum, email and evites are our primary means of communicating with you. Our goal this year is to increase our paid membership by at least 10%. If you haven't mailed in your envelope, please do. If you didn't receive the mailing, please contact me and I will be happy to mail the application form to you. Your dues and your involvement in our events is what will make our auxiliary stronger.

In my past newsletter articles, I couldn't give you the dates for this year's events. I hope that did not prevent you from attending our Brotherhood Shabbat that was combined this year with the beautiful voices of the choir. I am happy to say that our calendar has now been meshed with the many other Temple (including Sinai's) activities. Since we have several events planned before you receive another newsletter, I would like to call the following ones to your attention (especially those of you who didn't give us your email address).

Please mark you calendars and either attend or volunteer to help on:

December 5th - annual back-to-school pancake breakfast

December 5th - Temple Emanu-El and Congregation Sinai Brotherhoods combine to present the First Annual Jewish World Series of Poker

December 12th -monthly meeting, to be held in the kitchen while making latkes for the religious school

January 9th -monthly meeting, to be held in the Sisterhood lounge

January 15th - the first of this year's Havdallah, Dinner and Movie (tba) series.

January 23rd - Brotherhood's Annual Blood Drive - sign up now and avoid the rush to lock in your time slot. (Some walk-ins had to wait over an hour last year.)

February 6th - Reserve your place now for the first of three Diaspora Dinners. This one will focus on The Jews of Austria-Hungary.

Keep those membership checks coming in.

Hope to see you at our next meeting or event,

Jeff Marsh

brotherhood@templesanjose.org - (my preferred means of communication), or 408-270-2384 occasional evenings when

I'm not at a meeting

Save the Date!

January 23, 2005

Brotherhood Blood Drive

Temple House

Lox and Bagels for all donors

Watch for more details.

President's Message

Religious School Renovation Update

Those who have remodeled their homes have dealt with a myriad of questions such as 1) "How long will it take" (or, in some cases, ask themselves, "Will this ever be done?"), 2) "Will it really be what I hoped for?" and 3) "How much will it cost in the end?" These Religious School renovation questions were certainly on my mind when Shirley and I left for a trip to Australia and New Zealand.

When I returned to the Temple on October 26, the first two questions were answered:

1. Schedule: classes begin on Sunday, December 5. The attention to detail and focus on schedule by our building contractor, Dan Breeding and his construction foreman Kelly Gutierrez, design and material choices by architect John Miller, the dedication of time and expertise by the Temple's construction liaison, Uri Gottfeld, the devotion of Steve Greenberg to seeing this project to completion, and the day-to-day attention by our senior staff made this happen.

2. Facility: I am "wowed" by what I saw! Our renovated facility is a bright, cheerful environment for teaching and learning. It complies with all current earthquake, safety, and disabled access (ADA) requirements, as well as improving the ability to communicate between office and classrooms and provide better security functions. Religious School Principal Paula Marsh and Pre-School Director Barbara Smead have told me they are delighted with the changes.

I hope all of you will be as excited about this facility as I am, with a Religious School facility second to none in the area.

Below is the status to date on the cost of the renovations and our fundraising efforts.

• Original contract value:	\$2,181,000
• Current contract value after all changes:	2,215,000
- We anticipate completing the project <i>below</i> the current contract value.	
• Existing Capital Campaign funds:	\$ 130,000
• Pledges (5-year commitment):	<u>1,745,500</u>
• Total:	1,875,500

• Additional monies required:	339,500
- We anticipate approximately \$50,000 of this amount will come from the Building Fund	
• Cash received-to-date:	\$1,300,000
- Of course, we expect to receive additional pledge payments before the end of 2004	
• Loan requirement with a 5-year payback schedule:	\$ 815,000

Because of the vision of a few congregants and the timing of our leadership gift, we kicked off this project this year. We are particularly indebted to Syd and Peggy Levin for their leadership contribution that provided the cornerstone of this project. In addition, substantial contributions and pledges by many congregants enable us to complete the renovation *now* rather than much later. San Jose National Bank has also been most helpful, lending us the balance of construction funds while we complete our fundraising efforts.

The religious school building goes into business on December 5. After that, if you wish, we encourage you to make an appointment to take a tour of the building. Contact the administrative office to set up a time.

I'd like to dispel two rumors I've heard about the renovation:

1. *There is no minimum contribution;* every contribution is welcome and will be recognized.
2. *Fundraising is not complete;* we appreciate new pledges, which can be paid off over a 5-year period, and no amount is too great or too small.

Naming opportunities are available, for example, for those who pledge \$5,000 or more - a step, and for \$25,000 or more a classroom may be named; other opportunities also still exist.

Chanukah is a time of rededication. I recognize that you, our congregants, have re-dedicated yourselves to Temple Emanu-El by increasing your dues and other fees. Nevertheless, this would be the perfect occasion to make a pledge for the Religious School renovation if you have not already done so. A plaque recognizing all contributors will be mounted in the Religious School. It's not too late to have your name included in the list of contributors. Wouldn't your children or grandchildren be thrilled to see their family name on that plaque!

Happy Chanukah from the Lee Family to all of you.
Dan

Temple's End-of-Year Wish List:

Gardening tools - tree trimmers, clippers, rakes, hoes, etc., in good condition

Card tables - 36" or 42" square and matching folding chairs

6' folding tables like they have at Costco (~\$60 each)
For the Religious School Renovation: **Sofa Table** for the lobby

Loveseat with matching chair for the lobby

Temple-wide Email to Begin

Recently the office began sending life cycle notices to a broader group of congregants. At the same time, we began getting requests from members, who want to know about such events promptly.

We will send notices to everyone whose email address we have on record. If you do not wish to receive such messages, please email jjacobson@templesanjose.org.

These emails will be sent with blind copies and will not offer recipients the opportunity to <reply all>.

We look forward to your comments.

Women of Temple Emanu-El

Isha L'Isha, Lev L'Lev

Woman to Woman - Heart to Heart

The sisters of Temple Sinai in Oakland opened their hearts and synagogue to 250 women of WRJ District #24 for a biennial gathering from the Western US region. We especially want to thank Bette Myers and Bernice Gaon for arranging for the Hospitality Suite.

Some comments from our WOTE women are especially moving:

“I don't think I will ever forget the passion, beauty and inspirational experience at Friday night services, dinner and oneg during this convention weekend. The music and personally written readings was filled with music and love, it touched my heart forever. It was a privilege to be in your company and be so warmly welcomed by you all.”

“What a powerful and uplifting experience being with so many wonderful Jewish Women! Breaking bread, singing, praying and studying Torah in community was terrific and of course, the awesome moving Friday night services at Temple Sinai led by Rabbi Suzanne Singer and Cantor Ilene Keys with the Temple Sinai Choir.”

“Having attended several WRJ conventions both at the National and District levels, I am always amazed how wonderful they are. I get the chance to connect and reconnect with Jewish women from far and wide. What impresses me the most is the professional caliber of women who are proactive in supporting the issues that are so important Reform Jews. They are extraordinary women who model leadership skills, present workshops, and give us information to bring back to our own sisterhoods.”

“Rabbi Janet Marder, CCAR President, in her keynote speech about what Jewish Feminism means, gave me so much to think about and showed me a wonderful Jewish leadership role model. In relating her experiences, Rabbi Maya Leibovich, Kehilat Mevasserat Zion in Jerusalem, held up a book she wrote whose translated title is "Blessed Is God Who Made Me a Woman." How wonderful and empowering! I also liked Lynn Magid Lazar's, Board of Directors WRJ who comments, "Flexible people don't get bent out of shape," certainly we could all use that lesson in our everyday life challenges.”

Personally, this experience has re-energized our mission statement for what the Women of Temple Emanu-El, Sisterhood is really all about. To empower women and families in our synagogue to freely learn and enjoy living Jewishly and furthering our Reform Jewish values.

Two Sisterhoods - One Great Program!

On January 22, 2005, the sisterhoods of Congregation Sinai and Temple Emanu-El will sponsor a luncheon and women's study afternoon with Tziporah Naisi Sizomu, a scholar and educator from the Abayudaya Jewish community of Uganda. The Women of Temple Emanu-El have also been invited to take part in the egalitarian morning Shabbat service that will begin at 10 AM and will be led by the women of Congregation Sinai.

Tziporah Naisi Sizomu was born in Mbale, Uganda where approximately 600 members of the Abayudaya Jewish community reside. Tziporah is the first woman in the community to go to college and is also an active participant in the Abayudaya Kochavei Tikvah choir. She and her family are living in Los Angeles while her husband, Gershon, the current spiritual leader of the Abayudaya community, pursues his rabbinical degree at the University of Judaism.

Chairpersons of the day are Alisa Goldberg and Miriam Wolf of Sinai, and Judith Stubbs of Emanu-El. There will be music and food for the soul, brain and heart throughout the day.

The service is open to everyone without charge. If you plan to stay for the lunch and study session, please send a check for \$10.00 per person payable to "Congregation Sinai Sisterhood" to the Congregation Sinai Office at 1010 University Avenue, San Jose 95126. For more information, please call Judith Stubbs at 408-496-1660.

Sinai's traditional minyan will be at 9:00 AM in the Chapel, and Emanu-El's egalitarian minyan will begin at 9:00 AM in the Benefactors Room.

Did you know....

- Your Temple pledges are due when you receive your statement. We try to send your statement as early in the month as possible and appreciate receiving your response within the week.
- You are welcome to set up an automatic payment to the temple from your bank account. That way you don't have to think about whether you've sent your check... it's done automatically.
- The Temple still accepts Visa and Mastercard and appreciates a 3% voluntary increase in the amount of your payment to cover overhead charges.
- The 2004-2005 budget is based on dues bringing in 75% of our budgeted expenses for the year.

Women of Temple Emanu-El Calendar

December 2004 & January 2005

"Tea And All That Jazz", WOTE Paid-Up Member Event

December 5, Sunday, 2:30pm - 4pm, at Temple
Join friends for a light meal and entertainment by Homestead
High School Jazz Choir.
Free to WOTE members, guests \$5.
RSVP to Janet Wood at 730-1801 or janetrwood@comcast.net

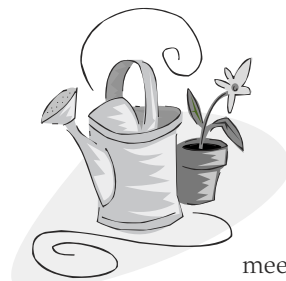
If you haven't yet sent in your dues for the 2004-2005 calendar
year you can pay them on line at
<http://www.geocities.com/wote2001/membership.html> or
contact Janet.

December 15, 6:30pm

Women of Temple Emanu-El meeting and Chanukah Party
6:30pm Potluck dinner followed by meeting
Please bring a \$10 gift to share
LOCATION: At home of Harriet Reisner, 7206 Via Lomas, San
Jose.
RSVP to Harriet at 226-2842 or
reisnerh@onemain.com

Sinai Sisterhood Book Club

December 19 - 7pm, Sunday "Seven Blessings"
by Ruchama King
January 30 - 7pm, Sunday "Four Mothers" by
Shifrah Horn
May RSVP to Shirie Eshel 265-1261 or shiriek@yahoo.com



January 9, Sunday At Temple 10am - "Bloomers Flowers Program"

When taking children to school, come
and stay for flower arrangement
program, Lunch Bunch and WOTE
meeting. No fee.

11:30am - WOMEN OF TEMPLE EMANU-EL
MEETING
12:30am - LUNCH BUNCH with school, donation for lunch \$3
RSVP to Harriet Reisner reisnerh@onemain.com or Bernice
Gaon 269-0131

Congregation Sinai & Temple Emanu-el Sisterhoods Invite You To Shabbat "Crossing The Sea - A Journey Into Our Hearts"

January 22 - Saturday, at Temple Emanu-El
Egalitarian Shabbat Service at 10:00AM followed a luncheon
and women's study afternoon with Tziporah Naisi Sizomu, a
scholar and educator from the Abayudaya Jewish community of
Uganda.
RSVP to Judith Stubbs spiritualjudith@yahoo.com or 408 496-
1660

Needed: 1 Purim Carnival Chair

Scheduled for Sunday, March 20, 11:30-1:30

- Lots of helpers already lined up
- Auction manager in place



Contact Marci Gerston,
650-967-7207, mgerston@aol.com

XYZ

Once a quarter, this group of seniors goes out to lunch at a
special restaurant.

On December 12 we will be at Max's at Westgate, 1600
Saratoga Avenue, for lunch at 12:30.

In January, our meetings will resume at the Temple on
January 9, 1:00 in the BFR.

Call Clare at 408-245-2837 to make reservations and
become a member. Membership is \$5 a year. Lunch costs
you \$6 and the club subsidizes the rest.

Welcome New Members

Shoshanah and Steve Miller
Michal Weiner and her daughter,
Shaina Painter
Shirley Burr and Rene Smith and their son,
Alexander

Today Rabah - Thank you

Marc Freed for the donation of a Kawai piano in memory of
his brother Stephen E. Freed. Our Cantorial Soloist, choir,
and students will enjoy it; the pre-school children will now
have a piano in their area.

WOTE for the vacuum cleaner for the newly re-opened
Religious School Building

B'nai Mitzvah



Spencer W. Lowry is an eighth grade student at Almaden Country School. He loves playing sports for the school. With the flag football season just finished, he is looking forward to basketball next. Spencer is doing well in all of his classes and is active in Drama and Leadership. He especially enjoys spending time with his friends, playing video games, watching sports, and going to movies. Spencer has a sister, Jessica, who is a college student, and a brother, Scott, 16, two dogs, a cat and a turtle.



Sydney Mirth will become a Bat Mitzvah January 15, 2005. She is a 7th grade honor student at Miller Middle School. Sydney lives in Saratoga with her parents, Linda and George, her brother Zack and her two cats, Moby and Max.



Karen Gold will be called to the torah as a Bat Mitzvah on Saturday, December 18, 2004. Karen is currently an 8th grader at Cupertino Middle School in Sunnyvale. She lives with her mom in Sunnyvale and with her dad in San Jose. Karen has a dog named Julia and a cat named Lilly. She also has an older brother at Homestead High School. She enjoys drawing (and does it very well!), playing basketball,

riding bicycle, hanging out with friends and watching the TV show "Friends".

Our Condolences to

Dr. Mel Grais and Linda Grais on the passing of his wife and her mother, Dian

William Poor and Pam Schuur on the passing of his wife and her mother, Joan

David Michelberg on the passing of his stepfather, Emil Sonnberger

Marc Terziev on the passing of his father, Marc G. Terziev

Gloria Ascher on the passing of her aunt, Shirley Boyers

Mary Cohen on the passing of her aunt, Rosario Avilino

Marci Gerston on the passing of her aunt, Bertha Friedman

Camperships!

As I write this message to you, we are preparing for Thanksgiving and, can you imagine, it is already time to begin planning for next year's summer camp!

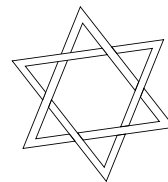
Temple Emanu-El encourages every student to attend a Jewish camp. Camperships are a means we at Temple Emanu-El utilize to reach that goal. They are awarded to Temple Emanu-El Religious School and Teen Jewish Studies attendees on the basis of financial need and/or scholastic achievement. Last year ten students received camperships to attend Camp Newman and Maccabiah.

Campership applications will be available through the Temple Emanu-El web site (www.templeanajose.org), in the Religious School office and in the Temple's administrative office. This academic year's application deadline will be January 23, 2005, and must be strictly enforced since the Campership Committee plans to award and notify recipients in early February.

Even if you do not have children of school age, please consider making a donation to one of Temple Emanu-El's Campership funds so others may have a rewarding experience. If your children are grown up, you know how important contributing to these funds is. If your child(ren) are still too small to attend a sleep-away camp, you may be applying for them in the future and will want to know that the funding is still available.

A cantor once said, "Give me the children for six weeks in the summer and I'll make them into strong, identified Jews."

Support our youth -- they are tomorrow's foundation.



Sandi Cohen

Mazel Tov

Fagie Rosen who was honored recently for her dedication to the San Jose Jewish community by her long-time employer, the Addison-Penzak Jewish Community Center, and over 200 community members who think she's terrific! The Temple Board of Trustees congratulated Fagie with a donation to the JCC in her honor, as well as presenting a memorial plaque in memory of her beloved husband, Jerry (z"l). A woman who is truly committed to the San Jose Jewish community and to the continuity of the Jewish People, we can't think of a more deserving person to have been so honored.

Wanda and Bob Pollack on the awards won by granddaughter, Ashley Diamond Pollack.

Eden Jackel, daughter of Nora Rousso and Jonathan Jackel, who was elected to the Yavneh student body board.

Tracy and Oren Arieli who were married in the Temple Sanctuary on November 4. Oren is a local photographer, while Tracy works at Sun Microsystems. They met here at the Temple while volunteering at High Holy Day services.

Religious School

What a year it's been, so far...

Just in case any of you have the opportunity to play Jeopardy on TV, I'd like to give you a little known answer to a question you might be asked.

The answer is "In nooks and crannies."

And the question is "Where did Temple Emanu-El hold Hebrew classes and Teen Jewish Studies during construction?"

To their credit, our teachers have been phenomenally inventive and patient during this process. In addition, our students have had the opportunity to survey every square inch of the Temple property!

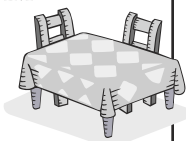
Well, our trials and tribulations are over. The sounds of construction have ceased and relative calm has returned to our school. We are in the process of unpacking boxes and getting reestablished in our beautiful, new building. If you haven't already seen the amazing transformation (you won't recognize the place), call the Religious School office and set-up a personal tour.

On December 5th, Sunday Hebrew classes resume at 8:45AM and continue meeting at this time on Sundays until June 12, 2005. Our first day of Jewish Studies is also on Sunday, December 5th. Come with your children and partake of the perfectly prepared pancakes, promptly served by the Boys of Brotherhood. Breakfast begins at 8:00AM.

Parents are encouraged to join their children at 10:00AM in the Sanctuary for T'fillah and the Welcome Back Assembly.

December 5: A Busy Day

- Breakfast 8:00 - 9:45 AM
- Hebrew 8:45 - 9:50 AM
- B'nai Mitzvah Class with rabbi 8:45 - 9:50
- Welcome back assembly 10 - 10:30 AM
- Jewish Studies 10:30 - 12:30
- December Dilemma 10:30 - 12:00
- Kabbalah and Mysticism 11-12:30
- Shalom Chaverim 11:00 - 12:15



Look for Information Tables for Parents

VIDEOGRAPHY

Weddings • Bar & Bat Mitzvah • Special Events

Blue Moon
Productions

PRESERVING A LIFETIME OF MEMORIES

Andy Hirsch • 408-206-6505
PO Box 1093 Campbell, CA 95009
blue-moon-productions.com

Preschool

Have you heard the news?? Our beautiful building is finished and we are back into our home!!

When we moved into the Temple House in May, we embarked on an adventure that nobody could have possibly imagined. Placing 76 young children, 8 teachers, 1 director and a ton of furniture into a room that echoes horribly was definitely not always the best thing to do, but looking back I wouldn't have changed it for the world. Being in such a space for six months taught us all many things:

- how to be very flexible,
- how to focus when things get a little loud,
- how to be respectful of each other's space,
- the office staff is very protective of the preschool,
- parking lots can be made into playgrounds if you have sidewalk chalk,
- volunteers can empty the Temple House in 11 minutes; Juan and Gerardo can set it up for a dinner in 19 minutes,
- Rabbi Magat and Cantor Rachel have an amazing amount of patience, especially when things get loud, and
- you can hear jackhammers through the Temple House walls!!

I must admit, I was worried, especially about our enrollment and how the families would handle such a drastic though temporary change. I am honored that our preschool families stood behind this endeavor 100%. We didn't lose any families because of the move and, in fact, we actually picked up quite a few new ones. Our preschool families helped move the preschool into the Chapel and back to the Temple House 21 times. Imagine moving furniture 42 times over six months! Our families supported the teachers throughout this time with goodies, chocolate, Starbucks and more. They showed us great compassion through the jack hammering mornings, the rainy afternoons and classrooms that were essentially being run out of boxes.

We could not have survived our adventure without the hard work and dedication of our teaching staff. They held it together and came through when the situation was less than ideal. I think they have become closer because of the experience and I know I have more respect for them and their dedication to their students and their loyalty to our school.

A huge thank you to all of those who helped us over the past months: Preschool Parents and Staff, Facility Guys, Office Staff, Preschool Board, Rabbi Magat and Cantor Rachel, Religious School Administration, Steve Greenberg, Construction workers (who tolerated being called Bob the Builder), Kelly, Odd Fellows, TBI, and, most of all, our preschool students. We couldn't have done it without you all!!

Now it is time to move forward, to enjoy our new home and to continue providing our students with the best education we can. We have our first KNOPP (Kid's night out pajama party) of the year on Saturday, December 5th. On Tuesday, December 14, the preschool families will enjoy their annual Preschool Chanukah Potluck Dinner and we will all enjoy a few weeks of re-energizing ourselves over winter break.

I highly encourage everyone to come and check out our new home. I hope you'll agree that it was well worth the wait!

Barbara Smead

December Already

Can you believe it's already coming up on the end of 2004! Writing this in the middle of November, there was just an article in the San Jose Mercury giving hints on end-of-the-year giving plans. Have you made yours already? Tax-wise, it might be a good idea for you to fulfill your pledges to Temple before 2004 ends – check with your tax person to see what is best for you.

Besides meeting your dues and Annual Maintenance Fund or Building Fund pledges for the entire year, you may have missed sending in your High Holiday Appeal envelope.

It is not too late! As many other congregations, this appeal brings money into our operating fund that makes up part of the difference between what we budgeted for the year and what part dues brings in. As you know, our dues bring in just over 50% of our budgeted expenses. We have to make up the difference with your generosity at other times of the year.

Religious School Renovation pledges are appearing on your statements, whether monthly, quarterly, or semi-annually. As the project winds down and we pay off our architect, construction company, and our sub-contractors, the difference between having the cash on hand to pay them and having to borrow the money from the bank (and pay interest for it) makes a big difference. We are still in need of donors to the project. Consider becoming one – or increasing your original pledge.

During January, you will receive a statement showing all your 2004 contributions. We thank you all for your generosity.

Have you purchased your **Entertainment 2005** book(s)?

Available for \$20 in the WOTE Gift Shop or Temple office.
All profits benefit the Temple.

*Need an out-of-town book?
Special delivery or have questions?*

Call Burt Epstein 408-268-2721

Join a Havurah!

Would you like to meet other temple families with similar interests? Interested in doing more social activities and making new friends? Then consider joining a Temple Emanu-El Havurah. A Havurah is a group of temple families who get together for regularly scheduled activities. They usually have something in common – some have small children, some teenagers, others include people with grown children, and others are made up of empty nesters. If you'd like more information on joining an existing Havurah or starting one of your own, please contact Debbie Michels at (408) 927-5857 or email debbiemichels@yahoo.com


Emanu-El 49ers in December and January

This group of singles age 49+ meets several times a month. We know that staying connected is important for our physical and emotional health. Try us; you'll find some wonderful people.

A few of our upcoming activities:

- **Celebrate Chanukah** with us on Sunday, December 12 at 2:00 PM at **Chai House**. We eat first, so be on time! We'll have appetizers, latkes, and dessert. No charge to paid up members; \$6 for guests. We all need to laugh more so bring your jokes. RSVP to Sol at 650-348-7092 by December 9.
- **New Year's Brunch**, Sunday, December 26, 12:30 PM, at the **Crowne Plaza Cabana** in Palo Alto. Great food. Free parking. RSVP to Sol by December 23.
- Sunday, January 30 at 1:00 PM, the 49ers are pleased to welcome **Rabbi Dana Magat for a session of "Ask the Rabbi."** Open to the community without charge, bring your friends to hear our wonderful rabbi. Light refreshments will be served.

To receive the complete calendar of events or for more information, call April Miller, 408-298-4181.



INTERO
REAL ESTATE SERVICES

A portion of the proceeds will be donate to Temple Emanu-El on all completed transactions

www.InteroRealEstate.com

Fredda Just
Broker Associate

1567 Meridian Avenue
San Jose, CA 95125
FJust@InteroRealEstate.com
FAX 408.979.5901
CELL 408.691.2086

408.979.5940

PORCELANOSA
EUROPEAN CERAMIC DESIGN

GAMA-DECOR
VENIS
CERAMICA DE ELITE

noken
SYSTEM-POOL



391 E. Brokaw Road
San Jose, CA 95112
408-467-9400, Option 2

Also in Sacramento at
916-858-2830

www.porcelanosa.com

November Shabbat Greeters

Thanks to our Friday evening greeters who welcome guests to Shabbat services and have answers to many Temple questions.



Mark Cahn
John Fox
Julie Moore
Paul & Janis Roth-Soto
Louis Sciupac & Nani
Noverita
Scott Sommer
Eva Stanley

Wine Tasting

Our 2nd Annual Wine Tasting Fundraiser will take place in the spring.

If you are interested in helping with the planning and preparation for this great event, please contact Scott Gordon (sco_gor1@pacbell.net or 408-313-6612) or Grant Michels (grantmichels@yahoo.com; work: 650-944-6723; home: 408-927-5857).



In the Community

Chanukah Celebration at the Fairmont Hotel

**Sunday, December 12
6:30 - 8:30 PM**

\$4 for seniors, \$7 per family
RSVP by December 6 (408) 874-5901

Sponsored by the Addison-Penzak Jewish
Community Center

eScrip

*Raindrops on roses, and latkes with knishes
Warm jelly doughnuts and lots of good dishes
Chocolate gelt, applesauce, all these good things
eScrip will bring coins ka-ching and ka-ching!*

Our eScrip program is growing, but we know we can do better! As your eScrip coordinator, I want to encourage you to use the credit/club cards you registered with eScrip to support Temple Emanu-El. If you aren't already a supporter, sign up now! Go to www.escrip.com or call me for a form.

Choosing to shop at eScrip merchants is the easiest way you can help us continue to achieve our fund-raising goals. If you have any questions about eScrip, please let me know. Thank you for your commitment to Temple Emanu-El.

Lorie Kaplan
408.267.4563



Hilary Rodoni, General Manager
Jen Young, Event Coordinator

780 Montague Expy, Suite 706
San Jose, CA 95131
(408) 435-7337
Fax (408) 435-7454

PERSONAL, PROFESSIONAL CATERING



DJ - Band Combinations!
10 Years Bay Area - Now in San Jose!
www.joelabramson.com info@joelabramson.com
408-265-7279 • 510-891-9980



Brotherhood / Sinai Men's Club First Annual Poker Party

Temple Emanu-El Brotherhood - Congregation Sinai Men's Club World Series of Jewish Poker Tournament

The Temple Emanu-El Brotherhood and Congregation Sinai's Men's Club cordially invite you to test your poker talents at our first annual **World Series of Jewish Poker Tournament**. The tournament will be held on December 5 at 6:00 p.m. in the Temple House. For \$50.00 you will be given \$5000.00 in chips and then compete in a winner take all **Texas Hold'em Poker Tournament**.

The winner will get ultimate **BRAGGING RIGHTS** and a nice bottle of wine. A small additional fee will get you food, drinks and an expert poker player (the Silicon Valley World Series of Poker champion) to offer advice. Half of the money collected will be given to Temple Emanu-El and Congregation Sinai's religious school scholarship accounts and the other half will be given to Temple Emanu-El's Brotherhood and Congregation Sinai's Men's Club to use for an end-of-the-year event.

Please look for an email/eVite/letter to sign up for the tournament. If you have any questions please contact Steven Dick at sidick@yahoo.com or Jeff Marsh at skibum@ispwest.com.

GOOD LUCK TO EVERYONE!



November 2004 Donations

We are grateful for the generosity of the following congregants and friends, who made donations to Temple Emanu-El in recent weeks. Donations received after November 8 will be acknowledged in the February Connections issue.

General Fund

In honor of Annie's Bat Mitzvah
Gina Dimino & James Kaufman
In memory of Bernard Delman
Grace Freiberg
In memory of Lena Feldman
In memory of Milt Weiss
In memory of Rebecca Greenberg
Louise & Al Greenberg
In memory of Claudine Morris
Gary Morris
In memory of Sam Spinner
Henry & Jean Richards
In memory of Johanna Marxheimer
In memory of Eugene Marxheimer
Edward Marxheimer
In memory of Hank Frederick
Peggy & Bruce Frederick
In memory of Herbert Turnbull
In memory of Dian Grais
Bob Krandel, glad you're recovery is moving along well
Jake Braunstein - mazel tov!
Jane Jacobson
Donation
Linda & Fred Miller
Victoria Rothchild
Louise Horenstein

Rabbi's Discretionary Fund

In honor of Rabbi Dana Magat
Irvin Becker
In memory of Herbert Turnbull

Joseph & Michelle Gabriel
In memory of Bernard Delman
Lucille Delman
In honor of Aviva Jacobstein's Bat Mitzvah
Martin & Sandra Levitt
In memory of Jack Graff
In memory of Herbert Turnbull
Dan & Shirley Lee
In memory of Charlene Weinstein
Ginny & Manny Siegler
Donation
Ida & Bertram Heyman
Villages Jewish Group
James Hubert
Irene Silverman

Choir Fund

In memory of Alfred Mayer
In memory of Sam Kaisal
In memory of Lillian Becker
Bob & Maggie Cant
Donation
Henci Goer
Jerry & Claire Barnhart
Debbie Wolfson
Bradford Wall & Ginny Hoffman
Margaret Cant
Gregory & Sara Calkins
Stan & Catherine Rubin
Nora Rouso and Jonathon Jackel
Michael & Evann Aronoff

Cantorial Discretionary Fund

In honor of Aviva Jacobstein's Bat Mitzvah
Martin & Sandra Levitt

Maurice Tucker High Holy Day Music Fund

In honor of Richard Davis
Susanne Tucker Oken

Kenneth Gordon Children's Prayerbook Fund

Get well wishes to Bob Krandel
Joseph & Marcia Riggio
For a Speedy Recovery to Ronald Brand
For a Speedy Recovery to Marcia Riggio
Harry & Marcia Ratner

Judith Jurman Omens Cemetery Beautification Fund

In memory of Judith Jurman Omens
In memory of Ida Osaiof
Rubin & Arlene Jurman
In memory of Barbara Ruckett
Joe & Edith Rosenberg

Campership Fund

Donation
Susan Amouroux

Israel Scholarship Fund

In honor of Fagie Rosenberg
Joseph & Michelle Gabriel

Facilities for the Aged

In memory of Joseph & Gertrude Wolff
Ilean Rudin

Shank-Rockman Family Sound System Fund

In memory of Leon Livchitz
Oda Livchitz & Abe Livchitz

Ida F. Kragen Consecration & Caring Fund

Donation
Michele Kragen Balaban

Religious School Fund

In memory of Geraldine Kahn Feldman
Clayton & Sandra Feldman

In memory of Nettie Mintzer

Samuel & Henrietta Mintzer

JoAnn Salman-Tehrani Homeless Fund

In memory of Albert Tidwell

Membership

Connections Down Under

Usually when Dan and I travel, we meet a lot of Jews from all over the world. Somehow this wasn't the case on our recent trip to New Zealand and Australia until we visited The Great Synagogue in Sydney which is in the heart of town across from a park on one side and surrounded by small stores on the other. The main entrance facing the park is not used for visitors so we went around to the back to a very small entrance where there was strict security. Not realizing that they only open the synagogue to visitors on Tuesdays and Thursdays at noon, we lucked out arriving at 12:05 on a Tuesday. The security guard hustled us in saying, "Hurry up! You're late!"

The presentation was geared to non-Jews with an excellent video followed by a talk by a very articulate gentleman. He even had a torah to show and blew the shofar quite proficiently. He calls his congregation "Traditional." While girls can be a Bat Mitzvah, the women are seated separately in the balconies. The service is all in Hebrew. What amazed me is that each man is assigned a seat with a lidded, wooden compartment in front of him for his tallit, prayer book, etc. Some of the men were seated in places used by their grandfathers and great grandfathers.

Why am I sharing all this in an article on membership? Not just to bore you with "what I did on my vacation! More importantly it is because no matter where we travel in the world, when we need that special Jewish connection, we head for the local synagogue. It feels like coming home to a place where we belong. If you are a current member of Temple Emanu-El, become more active just because it feels good. If you are not currently a member, consider becoming one. For you, too, it will feel like a place to belong – a place of "Connections."

"Behold how good it is when brethren dwell together."

Shirley Lee
Membership Chair
SABL@sbcglobal.net

From the Ritual Committee

We would like to share a letter we received from Ben Lilly (age 12) after he participated in our recent Nature Shabbat. It's invigorating to see our young people involved in and touched by such a service. It will be wonderful to see more and more congregants attend these services as more people find out how special these days are. Ritual Committee's next scheduled Nature Shabbat service will be in May 2005. Please watch for updates as we move closer to the date.

On October 30, 2004, we had a Nature Shabbat minyan at Sanborn Park. It was organized by Ginny Hoffman, and there were about 20 to 25 people there. Rabbi Magat led a casual minyan service, and we discussed the Torah portion, Vayikra. We talked about Abraham disagreeing with God about the destruction of Sodom and Gemorah and how it's okay to let out your anger at God, and how good and evil are interconnected (like cheesecake). It was very nice to hang out in nature. We occupied a covered picnic site "Costanoan" surrounded by a circle of redwood trees and a big sloping lawn. We saw several deer and heard the birds while we were praying and discussing. After the service we played some songs on the guitar, sang, schmoozed, and ate lunch. A few daring souls - Nancy Weintraub and Byron Lilly and their kids Ben (me) and Jordana, Ginny Hoffman, Maggie and Bob Newman, Ilene Levine and her daughter Anna, Rebecca Bronstein, and Cheri Magat with her kids Shira and Raya – went for a 6-mile hike to the ridge of the Santa Cruz Mountains. The going was tough, as the path was a thin, slippery way clinging to the side of a dramatic tree-covered valley, but we were troopers and made it past the tough part. Several of the party, including Cheri, Raya, Ginny, Shira and Rebecca, took the turnoff back about a mile before the summit. The rest of us went on to a picturesque valley of redwood trees en route to the very disappointing sign of Skyline Ridge with no view, then turned back to return at around 4:30 for the last pieces of pumpkin chocolate cheesecake, which happens to be interconnected just like good and evil. Most of the adept service-leaders had gone by the time dusk was approaching, so the remainder of us led an energetic but incognito Havdalah service before cleaning up the trash and taking home the goodies left over. It was definitely a fun Shabbat and wonderful day in nature.

Shabbat Shalom!
-by Ben Lilly

Thank you Ben for such a wonderful letter.

Dawn Chaffin
Ritual Committee Chair

MARY COHEN
&
MICHELE SCHNEIDERMAN

... your real estate "Connections"
(408) 981-2955 or (408) 373-6075

Main Point Realtors

A donation will be made to Temple Emanu-El at close of escrow
in appreciation of your business or referrals.

LAW OFFICE of DERRYL H. MOLINA

Wills | Trusts | Probate | General Practice

- **Free Initial Consultation**
- **Flat Fees**
- **Home Appointments**

1190 Saratoga Ave. (408) 213-2990
Suite 140 Fax 551-6161
San Jose 95129 attderryl@comcast.net

SUNDAY	MONDAY	TUESDAY	WEDNESDAY	THURSDAY	FRIDAY	SATURDAY
			1 4:00 PM Hebrew 5:00 PM Confirmation 6:00 PM TJS	2 6:00 PM Ritual Comm Mtg 7:00 PM Adult Ed: Death and Dying	3 8:00 PM Erev Shabbat Service: New Member Shabbat	4 9:00 AM Shabbat Morning Minyan 5:30 PM KNOOPP (RSVP required)
5 8:00 AM Welcome Back Breakfast 8:45 AM Hebrew 10:00 AM Jewish Studies 10:00 AM Tefillah/Welcome Assembly 10:30 AM December Dilemma 11:00 AM Shalom Chaverim 11:00 AM Adult Ed: Kabbalah 2:30 PM WOTE Paid Up Member Event	6	7 Chanukah: 1st Candle 7:30 PM Board Meeting 7:30 PM Intro to Judaism (Shir Hadash)	8 Chanukah: 2nd Candle 12:00 Noon Lunch & Learn 12:30 PM Preschool Board 4:00 PM Hebrew 5:00 PM Confirmation 6:00 PM TJS	9 Chanukah: 3rd Candle 7:00 PM Adult Ed: Death and Dying 7:30 PM Choir Rehearsal	10 Chanukah: 4th Candle 6:00 PM Family Potluck Dinner 7:15 PM Erev Shabbat Family Chanukah Service	11 Chanukah: 5th Candle 9:00 AM Shabbat Morning Minyan 10:30 AM Bar Mitzvah of Spencer Lowry
12 Chanukah: 6th Candle 8:45 AM Hebrew 9:00 AM Brotherhood Meeting 10:00 AM Jewish Studies 11:00 AM Shalom Chaverim 11:00 AM Adult Ed: Kabbalah 11:00 AM Judaism 102	13 Chanukah: 7th Candle	14 Chanukah: 8th Candle 5:30 PM Preschool Chanukah Potluck 7:00 PM Choir Rehearsal 7:00 PM Social Action Comm 7:30 PM Intro to Judaism	15 4:00 PM Hebrew 5:00 PM Confirmation 6:00 PM TJS 6:00 PM WOTE Chanukah party (offsite)	16 7:00 PM TE Choir @ St. Joseph Cathedral	17 6:30 PM Tot Shabbat 8:00 PM Erev Shabbat Service	18 9:00 AM Shabbat Morning Minyan 10:30 AM Bat Mitzvah of Karen Gold
19 8:45 AM Hebrew 9:00 AM B'nai Mitzvah Information Meeting 10:00 AM Jewish Studies 11:00 AM Adult Ed: Kabbalah 11:00 AM Judaism 102	20 <i>Preschool Winter Break</i>	21 <i>Preschool Winter Break</i>	22 <i>Preschool Winter Break</i> Noon Lunch & Learn Torah Study	23 <i>Preschool Winter Break</i>	24 <i>Preschool Winter Break</i> 6:30 PM Kabbalat Shabbat Service 7:30 PM EESY Chinese Dinner and Movies	25 9:00 AM Shabbat Morning Minyan
26 No School: Winter Break	27	28	29	30	31 6:30 PM Kabbalat Shabbat Service	

SUNDAY	MONDAY	TUESDAY	WEDNESDAY	THURSDAY	FRIDAY	SATURDAY
						1 9:00 AM Shabbat Morning Minyan
2 No School Winter Break	3	4 7:30 PM Board Meeting 7:30 PM Intro to Judaism (Shir Hadash)	5 4:00 PM Hebrew 5:00 PM Confirmation 6:00 PM TJS	6 7:30 PM Choir Rehearsal	7 6:00 PM Family Potluck Dinner 7:15 PM Erev Shabbat Family Service (Dalet)	8 9:00 AM Shabbat Morning Minyan
9 8:45 AM Hebrew 9:00 AM Brotherhood Mtg 10:00 AM Jewish Studies 10:00 AM Relig. School Board Mtg 10:00 AM WOTE: Flower Arranging 11:30 AM WOTE Meeting 12:30 PM Lunch Bunch	10	11 7:00 PM Social Action Comm 7:30 PM Choir Rehearsal	12 12 Noon Lunch & Learn 4:00 PM Hebrew 5:00 PM Confirmation 6:00 PM TJS	13 6:00 PM Ritual Comm	14 8:00 PM Erev Shabbat Service	15 9:00 AM Shabbat Morning Minyan 10:30 AM Bat Mitzvah of Sydney Mirth 6:00 PM Havdalah, Dinner & A Movie
16 8:45 AM Hebrew 10:00 AM Jewish Studies	17 Martin Luther King Day Temple offices/preschool closed	18 7:00 PM Choir Rehearsal 7:30 PM Intro to Judaism (BFF)	19 4:00 PM Hebrew 5:00 PM COConfirmation 6:00 PM TJS	20 7:30 Choir rehearsal	21 6:00 PM Tot Shabbat 7:00 PM Erev Shabbat Service 8:15 PM Shabbat Shira	22 9:00 AM Shabbat Morning Minyan
23 8:00 AM - 12:30 PM Blood Drive 8:45 AM Hebrew 10:00 AM Jewish Studies 10:00 AM Camp Swig/Newman Presentation 11:00 AM Kabbalah 11:00 AM Judaism 102	24	25 Tu B'Shevat	26 12:00 Noon Lunch & Learn Torah Study 4:00 PM Hebrew 5:00 PM Confirmation 6:00 PM TJS	27	28 6:30 PM Kabbalat Shabbat Service	29 9:00 AM Shabbat Morning Minyan 10:00 PM EESY Lock-In Event
30 8:45 AM Hebrew 10:00 AM Jewish Studies 10:30 AM Interfaith 1:00 PM 49ers present Rabbi Magat	31					

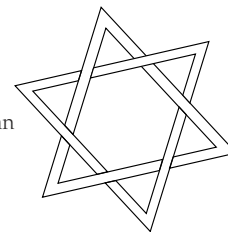
Heartfelt thanks to those of you who contributed to the 5765 High Holiday Appeal

Rosalyn & Robert Applebaum
Karen & John Arensberg
Gloria & Fred Ascher
Barbara & Mort Berlant
Sheldon Blickman and Margie Resnick
Hannah & Michael Boyd
Judith & Bud Charlick
Vivian Cohen
Lucille Delman
Gina Dimino & James Kaufman
Neil Eisenberg
Gail & Tim Evjenth
Diane & Emery Fabri
Sandra & Clayton Feldman
Armeda & Joseph Fischer
Julie & Wayne Firsty
Flora Fishoff
Joan and Marvin Fox

Laura Frances & Irwin Jacobson
Varda Friedman
Ruth Lynn Glass
Muriel Goldberg
Louis Goldman
Elaine & Michael Goldstein
Elsa Gordon
Beryl & Herm Greenberg
Steve and Arlene Greenberg
Molly & Enrique Guadimos
Rhonda & Robert Hansen
Jo Anne & Robert Hersch
Pamela and Jeff Hoffman
Arlene & Rubin Jurman
Lorie & Al Kaplan
Mike Krown & Stephen Reiss
Bobi & Raymond Levine
Oda Livchitz and Abe Livchitz
Rita & Joseph Loren

Deborah & Kenneth Marcus
Michele & Jeffrey Marsh
Estelle & Paul May
Golda Miller
Shoshanah & Steve Miller
Joy Morris & Jeslie Chermak
Margaret & Robert Newman
Fagie Rosen
Stacey Hendler & Roger Ross
Janis & Paul Roth-Soto
Melanie Rudnick
Judith Sapper
Michele & William Schneiderman
Millie Segal
JoAnn Shank
Virginia & Manfred Sieglar
Richard Sogg
Michel Stein
Ellen & Herbert Terrell

Bernice & Ben Vitcov
Nomura Wakako & Greg Cohen
Ilana & William Westerman
Sherri & David Wiesner
Elias Zasloff
Helen Zimmerman



Yahrzeits

DECEMBER 3 (8:00 PM SERVICE)

Eleanor Babel, Ben Benson, Esther Berg, Jean Bernstein, Elias Cohen, Norman Cohen, Meyer Davidson, Abraham Funk, Jean Gambord, Zelda Heitner, Bettie Hirsch, Howie Kamins, Irving Kass, Gussie F. Klein, Samuel Lavine, Dr. Charles C. Lax, Jim Margolan, Woodrow A. Morgan, Norman E. Osborn, Amelia Peretz, Benjamin Poley, Betsalel Pomeranets, Mae Gladys Rossman, Sara Sandler, Harold Paul Teren, Hyman Unell, Herman Weissberger

DECEMBER 10 (7:15 PM SERVICE)

William Asher, Etta Bach, Murray Bernstein, Bessie Chernin, Max Cohen, Eli Delman, Sheila Federman, Sarah Gofman, Samuel Grodnitzky, Julius Gross, Anna Jacobs, Albert Kragen, Barney Malitz, Morris Pessah, Jules Prizant, Isaak Rauinshtein, Jerry Richman, Stella Roberts, Sarah Rosenberg, Mary Schwartz, Ellen Shapiro, Kaye Shapiro, Morris Slavin, Nan Tepper, Sylvia Terrell, Miriam Turetzky, Israel Weinberg, Sarah Weis, Louise Morison Winter

DECEMBER 17 (8:00 PM SERVICE)

Jacob Banks, Mark Bershadsky, Esther Bessner, Gladys Osborn Blauner, Jennie Bloom, Maurice Carl, Anna Chusid, Leota Maurine Cooper, Abraham Dorf, Ida Epstein, Cecila Estrina, Evsey Estrina, Jerome, Wolfe Gootherts, Herman Gusdorf, Vera Hirsch, Pauline Jaffe, Jennie Kaplan, Ted Klugman, Richard Levin, Jerry Magidman, Charlotte Newman, Rae Ostrow, Dr. Minnie Perlstein, Alex Purwin, Michel Roll, Amelia Salomon, Anna Sarah Shanske, Simon Shumer, Steve Saul Siegel, Rose Stein, Mark S. Sternberg, Nathan Bernard Taylor, Melitta Tidwell, Katrine K. Walker, Alex Weis, Eugene Weiss, Hilda Gordon Wolff, Marcy Epstein Wolff, Morris Young, Walter Zimmer

DECEMBER 24 (6:30 PM SERVICE)

Oscar Altman, Bernard Becker, Esther Berger, Rose Braunstein, Herman Brown, Hyman Carl, Diane Creech, Else Danziger, Sarah Feldman, William Gizang, Binyamin Gold, Fannie Goldberg, Hannah Gordon, Jacob Jacobson, Marcus Laevsky, Hyman Levine, Jules Loventhal, Morris Marsh, Julius Mendel, Simon Panikoff, Gertrude Parlamen, Rose Pollack-Berlant, Theresa Queyrel, Lorin Rosenberg, Rebecca Sachs, Irving Shain, Ben A. Solomon, David Sommer

DECEMBER 31 (6:30 PM SERVICE)

Monty Chusid, Eugenia Dellarocca, Luba Elbert, Annabelle Erlichman, George Everett, Michael Fain, Jacob Goldberg, Jenny Goldstein, Ben Greebler, Mary Jurman, Marian Kotlier, John Kramer, David Kristal, Mark Leon, Sam Marchick, Ernest Marcus, Anna Rae Marks, Morris Nissman, Irving Norton, Betty Ostran, Ike Ottenheimer, Gussie Panikoff, Faranghee Salman-Tehrani, Morris Shulman, Harry E. Slonaker, Elliott Sobol, Max Unell, Dennis Wallvang, Sadie Weinberg, Sylvia Weissman

JANUARY 7, 2005 (7:15 PM SERVICE)

Joseph Applebaum, Hildegard Berliner, Mendel Bessner, Andrew Boxer, Leonard Chassen, Margaret Chassen, Eli Epstein, Jacob Feldmann, Maryashi Glass, Herman Goldstein, Kenneth Gordon, Gable Gorenberg, C. Sylvester Green, Samuel Handloff, Leo Harth, Ida S. Howard, Ralph C. Hutchins, Maxwell Ibsen, Leo Just, Kevin Krown, Carl Lazarus, Edward Lutsky, Alan Matusow, Lawrence Newman, Anne Pomarantz, Robert Puopolo, William Ravel, Lena Rosenberg, Marilyn Bach Rosenthal, Abraham Schaffer, Leon Schier, David Schwartz, Israel Siemon, Jack Smith, Sally Sogg, Louis P. Sternberg

JANUARY 14, 2005 (8:00 PM SERVICE)

Ethel Asher, Joseph Bain, Bessie Cohen, Alan Danoff, Raymond Emrich, Terry Freeling, Arnold Grais, Dora Morris Green, Ruth Guttman, Sam Guttman, Fannie Klein, Sam Kovnat, Edna Omel Loren, Mary Neves, Fred Oken, Joseph Preis, Ida Ress, Bernard Rubenstein, Leo Sachs, Sylvia Saslaw, Norman Silver, Joseph G. Singer, Simon Slater, Mary Stoll, Albert Toff, Al Turek, Morris Weis, Iris Weisman, Leonard Jack Wiesner

JANUARY 21, 2005 (7:00 PM SERVICE)

Verna Nadine Albin, Ben Atlas, Rosalee Atlas, Abraham Zahel Axelrad, Lee Axelrad, Eve Miriam Charlick, Frank Cunningham, Samuel Director, Michael Bernard Elman, Suzan Fischer, Ray Friedman, Evelyn Goldberg, Alice Goldschmidt, Joseph Grais, Mona Jacobs, Gertrude Leiter, Mary Leon, Frances Lutsky, Jacob Gersterfeld Maltiel, Paul Margolis, William Medeiros Sr., Essie Miller, Morris Myers, Benjamin Nerenberg, Lester Le Coke Newbrough, Morris Ostrow, Dora Rosenthal, Joseph Rosenthal, Harry Rosner, Samuel N. Rubin, Joseph Schwarz, Fagie Segal, Max Segal, Rose Smith, Beatrice Stein, Maurice Tucker, Mirvena Wolff

JANUARY 28, 2005 (6:30 PM SERVICE)

Mabel Baker, Katherine Becker, Abraham Boxer, Princess Braithwaite, Bernard Bronk, Michael Burnett, Hyman Cohen, Philip Cohen, Max Essig, John Fearn, Tybil Garshon, Rose Gorenberg, David Herlich, Morris Hirsch, Eric Hoffman, Eric S. Hoffman, Norman Jackman, Pauline Kessler, Fay Kramer, Edith Krulan, Belle Ladowitz, Leo Lee, Virginia Levin, Frank Lynn, Lillian Marchick, Sarah Marchick, Maurice Miller, Fannie Pessah, Ted Purwin, Al Reiser, Philip Reiter, Faye Rittberg, Abraham Joseph Rosenberg, Philip Rosenberg, Gerald H. Sapper, Rose Schoenfeld, Laurena Southard, Abbe Vederoff, Hannah Weiner, Robert Gary Weiner

Oneg Shabbats

The treats we share after services are generously provided by members of our congregation and friends. Last month we enjoyed onegs sponsored by the following:

November 5: Friends and family of Glen Hoop, in honor of his Bar Mitzvah.

November 12: Estelle and Paul May; Joyce and Eric Mendel, in memory of Joyce's father, Samuel Freeling; Phyllis and Arthur Messinger; Golda Miller; Henrietta and Sam Mintzer; Bonnie and Gerald Neary; and the WOTE Bakeshop.

November 19: The men of Temple Emanu-El's Brotherhood, in honor of Brotherhood Shabbat.

If you would like to schedule a specific date to honor the memory of a loved one or to celebrate a special simcha, please contact Anita Medeiros, 773-1410 or ajmedeiros@comcast.net.

Religious School Renovation Campaign Is On-going

In the late 1990's Ruth and Bob Krandel began speaking with people about the need to revamp our tired, but proud Religious School Building. Beginning that long ago, donations have been received resulting in the building that will be inaugurated as school opens for the year on December 5. As you know, we are still in need of donations for the renovation. Following is a list of those who already stepped forward in support. We extend our deepest appreciation to them

Manfred & Gloria Ascher
Bernard Axelrad
David & Janet Berg
Aaron & Evelyn Berman
Marc & Jeanne Birnkrant
Ronald & Kristi Blumstein
Dan & Beatrice Brodovskiy
Teri & Bob Broleman
Henia Burman
Edward & Marjorie Cahn
Michael & Ruth Cahn
Bob & Maggie Cant
Daniel & Connie Carr
Barry & Mary Cohen
Myrna Cohen
Elyse Cohen-Morrow
Rick and Doris Davis
Janis Decker
Mark & Bette Emanuel
Burt & Sandy Epstein
Kirk Everett & Rebecca
Dishotsky
Clayton & Sandra Feldman
Joseph & Armeda Fischer
Ronald & Jodie Fischer
Nesya & David Fishstrom
Marvin & Joan Fox
Robert & Ruth Fox
Bruce & Peggy Frederick
Grace Freiberg
Joel & Marcia Gerston
Lori & Jeff Ghan
Sheila Gold
Gussie Goldman
James & Michelle Goldman
Leigh & Simona Goldstein
Martin & Julia Goldstein
Margie Goodman
Elsa Gordon
Scott & Denise Gordon
Marvin & Bobbye Gorenberg
Uri & Judith Gottfeld

Melvin & Dian Grais
David & Cheryl Graubart
Philip & Roma Green
Herm & Beryl Greenberg
Steve & Arlene Greenberg
Enrigue & Molly Guadamos
Philip & Susan Hammer
Robert & Rhonda Hansen
Robert & Jo Anne Hersch
David & Lorna Hornby
James Hubert
Janet & Gary Katz
Robert & Kelly Kaufman
Ruth & Robert Krandel
Steve & Shari Krandel
Steve & Annette Ladowitz
Amy Lambert & John
Braunreuther
Daniel & Shirley Lee
Morton & Marilyn Leiter
David Levin
Richard & Emily Levin
Foundation
Bernie Levine
Raymond & Bobi Levine
Gordon Levy
Byron Lilly & Nancy Weintraub
Oda Livchitz & Abe Livchitz
Tom & Bonnie Marantette
Rabbi Dana & Cheriell Magat
Grant & Debbie Michels
Samuel & Henrietta Mintzer
George Mirth & Linda Blauner
Sherman & Betty Naymark
Jerry & Bonnie Neary
Robert & Wanda Pollack
Harry & Marcia Ratner
Sally Ravel
Myra Reinhard
David & Esther Reiser
David & Harriet Reisner
Henry & Jean Richards

Leo Rinsler
Wayne & Iva Rose
Bernard & Ruth Rosenberg
Sidney & Doris Rosenberg
Richard & Sharon Rosett
Roger & Stacey Hendlar Ross
Al & Bunny Roth
Janis & Paul Roth-Soto
Kurt Rubin & Lori Telson
Richard & Eleanor Rusnak
Stan & Ceci Salomon
Ralph & Sara Schmitt
Arthur & Lynn Schnitzer
Phillip Schwarz
Millie Segal
Jay & Jenny Shain
JoAnn Shank
Judith Siegel
Sally Siegel
Arnold & Diane Simon
Kathryn Kolder & Richard
Singer
Richard Sogg
Michael & Millie Sprintz
Herbert & Ellen Terrell
Susanne Tucker-Oken
Andrew Weinberg & Lynn
Offenhartz
Stewart & Brenda Weinstock
Cecil & Nanette Weintraub
Alan Weissberger
Bill & Ilana Westerman
Dan & Laura Winter
Geraldine Witkin
William & Janet Wood
WOTE
XYZ Club
Elias Zasloff
Jonathan & Raylene Zatz
Richard & Stacey Zis

Temple Emanu-El

1010 University Avenue
San Jose, CA 95126-1898
Telephone: (408) 292-0939
Fax: (408) 292-7625
www.templeсанjose.org

Connections is published 10 times
a year by Temple Emanu-El

Dana L. Magat Senior Rabbi
Joseph Gitin, D.D. Rabbi Emeritus
Rachel Michelberg Cantor Intern
Wayne Rose ... Cemetery Administrator
Jane Jacobson Temple Administrator
Barbara Smead Preschool Director
Paula Marsh Religious School Principal
Deborah Zimmer Member Services
Coordinator

Officers

Daniel J. Lee President
Laura Danoff Robinson... Vice President
Jean Richards Vice President
Dan Winter Vice President
Barry Cohen Treasurer
Steve Greenberg Past President

Trustees

Mort Berlant	Larry Hirsch
Burt Epstein	Jonathan Hirshon
Marci Gerston	Randy Levinson
Steve Krandel	Nora Rousso
Uri Gottfeld	JoAnn Shank

Auxiliary Presidents

Bunny Fisher/Harriet Reisner WOTE
Jeffrey Marsh Brotherhood
Claire Barnhart XYZ
David Streeter EMTY Sr. Youth Group



Affiliated with the
Union for Reform Judaism

Temple Emanu-El Contribution Form

Enclosed please find \$ _____ as a donation to _____ Fund.

Given in honor of or in memory of: _____

Please list additional donations on a separate sheet

Please send acknowledgement to:

Name _____

Please make your checks payable to Temple Emanu-El

Address _____

City _____ State _____ Zip Code _____

Contributions are tax deductible

Donor's Name _____

Address _____

City _____ State _____ Zip Code _____

Temple Emanu-El List of Funds

General Fund

Annual Maintenance Fund
 Religious School Building Renovation
(listed below by category in alphabetical order)

Memorial Funds:

Andrew Apte Temple Historical Fund
 Lollie Brickner Media Center Fund
 Harold Cahn Prayerbook Fund
 Michael Elman Campership Fund
 Milton Fox Campership Fund
 Ralph Goldeen Library Fund
 Kenneth Gordon Children's Prayerbook Fund
 Beverly Jordan Temple Beautification Fund
 Lou & Clara Juren Library Fund
 Ida F. Kragen Consecration and Caring Fund

Herbert Marchick High Holy Day Fund
 Phyllis Matzner Campership Fund
 Phyllis Omel Jr. Choir Fund
 Judith Jurman Omens Cemetery Beautification Fund
 Alvin Ravel Garden Fund
 Betty Rinsler Religious School Endowment Fund
 JoAnne Salman-Tehrani Homeless Fund
 Winnie Schare Interfaith Shabbat Fund
 Maurice Tucker High Holy Day Music Fund

Other Tribute Funds:

Adult Education Fund
 Bertram Berns Music Fund
 Campership Fund
 Cantorial Discretionary Fund
 Caring Fund
 Choir Fund

Facilities for the Aged Fund
 Leonard and Bernice Gaon Campership Fund
 Israel Scholarship Fund
 Prayerbook Tribute Fund
 Rabbi's Discretionary Fund
 Religious School Fund
 Religious School Scholarship Fund
 Shank-Rockman Sound System Fund
 Sisterhood Remembrance Fund
 Tzedakah Fund
 Weintraub Religious School Scholarship Fund

Other Tribute Donations:

Memorial Plaque - \$600 each
 Sanctuary Chair Plaque - \$400 each
 Prayerbook Tribute - \$25 each



TEMPLE EMANU-EL
 1010 University Avenue
 San Jose, CA 95126
 (408) 292-0939

Address Service Requested

Non-profit Org.
 U.S. Postage
 PAID
 San Jose, CA
 Permit No. 542

**TIME VALUE
 DATED EVENTS**