



Temple Emanu-El

Connections

The Torah is a tree of life to those who hold fast to it

Temple Emanu-El, San Jose

September 2003 / 5763 - 5764

Volume 66 , No. 15

High Holy Day Services

SATURDAY, SEPTEMBER 20 AT TEMPLE EMANU-L

7:00 PM – Selichot Study Session

8:00 PM – Reception

9:00 PM – Selichot Service

ROSH HASHANAH

FRIDAY, SEPTEMBER 26

6:30 PM – Children's Service (PreS - 2nd Gr)*

8:00 PM – Rosh Hashanah Evening Service

SATURDAY, SEPTEMBER 27

8:30 AM – Torah Study

9:30 AM – Rosh Hashanah Morning Service

11:30 AM – Family Alternative Service (3 Gr +)*

5:00 PM – Tashlich (Oak Meadow Park)

FRIDAY, OCTOBER 5

6:30 PM – Shabbat Shuvah Service at Temple

Emanu-El

YOM KIPPUR

SUNDAY, OCTOBER 5

6:30 PM – Children's Service (PreS - 2nd Gr)*

8:00 PM – Kol Nidre Service

MONDAY, OCTOBER 6

9:30 AM – Yom Kippur Morning Service

11:30 AM – Family Alternative Service (3 Gr +)*

1:00 PM – Social Action/Tikkun Olam

1:45 PM – Haftarah - Jonah

2:00 PM – Study Session

2:45 PM – Healing Service

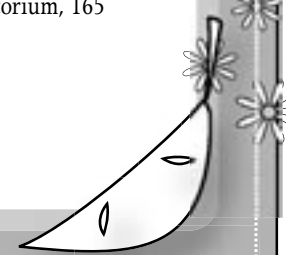
3:45 PM – Musical Interlude

4:30 PM – Yizkor/Neilah*

* There is no charge for Children's, Family, or Yizkor Services, but reservations must be made in advance. For all ticket information, please contact the Temple office at (408) 292-0939. Unless otherwise indicated, all services will be held at the San Jose Civic Auditorium, 165 West San Carlos Street, between Market and Almaden.

5764

tekiyah
shevarim
teru'ah



From the Rabbi

Date: September 2003 / Elul 5763

From: Rabbi Dana Magat

To: You

Subject: The High Holy Days



Hi. I hope all is well with you. So what are you doing on the evening of September 26? I tell you what -- I'll meet you at the Civic Auditorium around 8:00PM for our Erev Rosh Hashanah Service, unless of course you have a young family, in which case you may want to come to the children's service at 6:30PM. I was planning on going to that anyway. I am so exciting about being able to pray with you and with our entire congregation -- this is going to be great!

I am sure you are wondering about parking. Well, the office is going to be sending you lots of details about where to park and how to go about getting to the Civic Auditorium. I have found it easy to locate and get to the times I have been there this summer. I also noticed that the light rail has a stop literally in front of the Civic Auditorium. Besides, on Rosh Hashanah and Yom Kippur we are going to have lots of volunteers from our congregation helping direct and greet people. Hey if you want to participate in helping with ushering give the office a call -- they would love to hear from you.

Did you know that we are again going to have a family alternative service after the formal morning service? It will be at 11:30AM both days. On Rosh Hashanah we will have our Tashlich service again at Oak Meadow Park in Los Gatos at 5PM. Don't forget to bring a picnic dinner.

We are also going to have our study session, healing service and musical interlude again on Yom Kippur. But we are also adding a new piece to our Yom Kippur experience, a Social Action/Tikkun Olam program that will be organized by former Mayor of San Jose, Susan Hammer. She is going to lead a discussion on the current state of our educational system. That will be at 1PM on Yom Kippur.

I look forward to spending the High Holy Days with you. On behalf of my family, Cheri, Shira and Raya, we wish you a very healthy and good New Year.

L,shana Tova Umetukah,
Rabbi Dana L. Magat

An Introduction to the High Holy Days: Preparing for the Days of Awe

THURSDAYS, 7-8:30 PM, SEPTEMBER 4, 11, 18
taught by Rabbi Dana Magat.

RSVP to the Temple office.

From the President

As summer comes to an end (much too quickly for me), the Temple office once again becomes abuzz with activity. Not that they are not always busy, but before the High Holy Days, the activity level goes up several notches.

Because the office staff has been reduced for financial reasons, workloads in the office are even heavier than before.

On their behalf, I ask you to bear with them. Responses may not be as timely, some data may be missing, some calls may be answered by machine.

The dedication of our office staff, however, is without equal. Each person is committed to getting what you want or need in a timely fashion. You can help by ensuring that your account is current so that your High Holy Day tickets can be mailed on time.

Thank you to all of the Temple members who have already returned their 2002-2003 annual pledge forms. By the middle of August, 15% of the congregation has not yet responded. Please, if you have not yet mailed in your commitment form, do it as soon as possible. Time is now of the essence. As we will all be together for the first time in many years, some things require more time, and your help (in this matter) will be much appreciated.

As promised in the last Connections, this issue includes a list of committees, their chairs, and also to whom the chair reports. If you are interested in becoming more active in a particular area of synagogue life, please do contact the committee chair. You will notice that some committees are still in need of leadership. If you are willing to take this on, please contact me or the relevant Vice President.

Arlene and I wish each of you the healthiest and happiest New Year possible.

Steve

Musical Notes

As I write, the whole Temple staff is in the midst of a flurry of High Holiday activity. It's hard to imagine that my long-held dream of worshiping together as one congregation will finally be coming true. Thanks to Rabbi Magat and the off-site committee for making it happen.

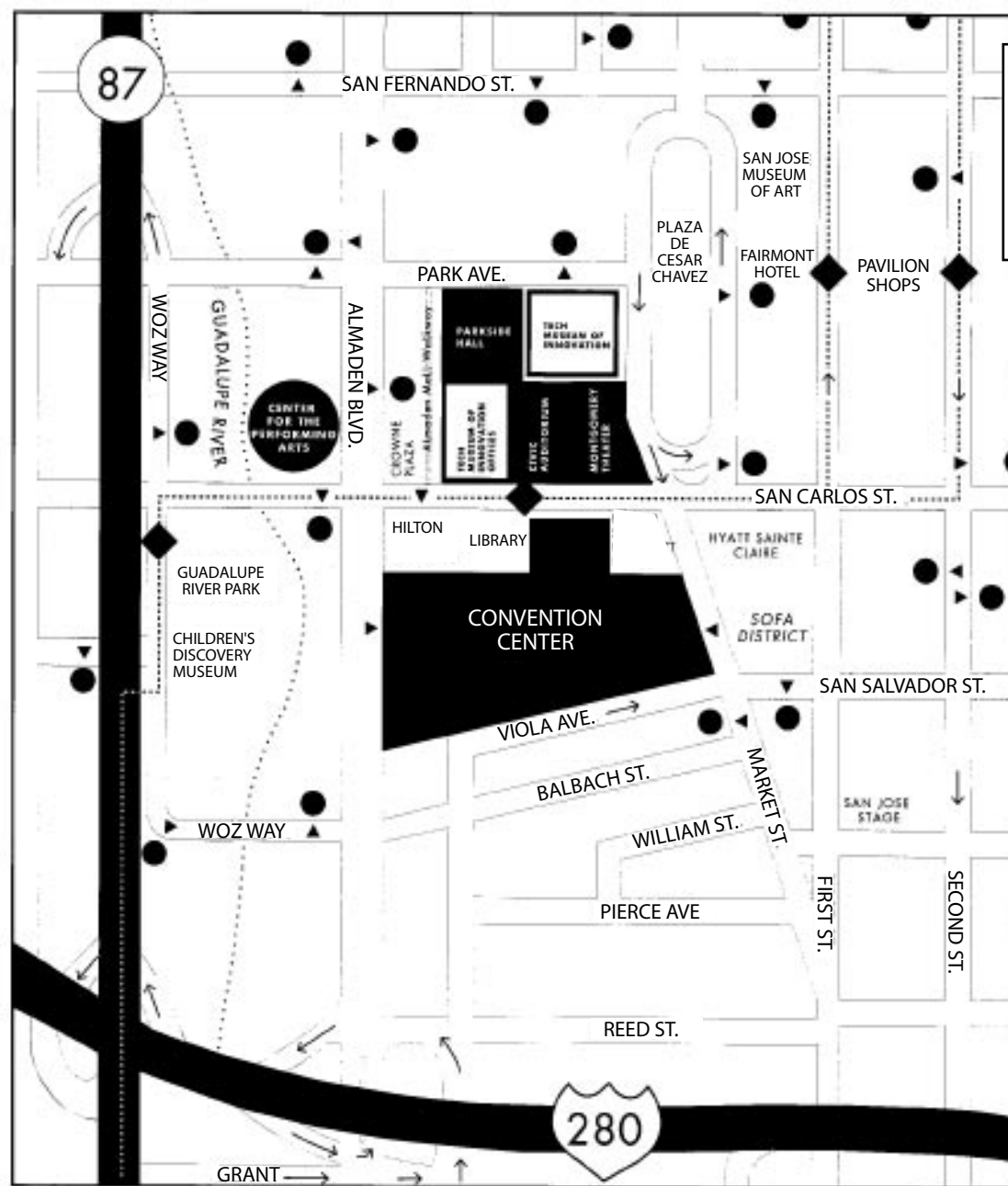
Along with a new venue, you'll notice a few additional differences. First, the choir will be led by a new conductor, Michael Morris. Michael and I have sung together in opera performances for years. He is a fine singer and a wonderful conductor. Michael is Director of Music at Saint Jude's Episcopal Church in Cupertino. We are lucky to have him.

Second, and perhaps most significant, is that we will be trying out a new Avinu Malkeinu this year. Before you start panicking, let me reassure you that we will sing the beloved Janowski version (with which you are so familiar) for Rosh Hashanah. The new version, by Michael Isaacson, actually is more accurate textually for Yom Kippur. So I urge you to remember the psalmist's words: Sing to God a new song - Shiru Ladonai shir chadash. It is important to welcome new melodies into our hearts, just as we retain our love for the old ones.

Kol Tuv!

Rachel Michelberg
Cantorial Soloist

High Holy Days Parking



- Paid Public Parking
- ▲ Parking Lot Entrance
- Light Rail Line
- Guadelupe River Walk
- ◆ Light Rail Station

Free Parking

Weekdays after 6 p.m. and all day weekends and major holidays in seven public parking lots and garages in downtown San Jose.

Market & San Pedro Square Garage (between Santa Clara and St. John streets)

Third Street Garage between Santa Clara and St. John Streets

San Fernando & Third Street Lot (Block 3) between Second and Third streets, north of the Repertory Theatre

San Fenando & Second Street Lot (Block 2) on San Fernando Street, between First and Second streets, across from Gordon Biersch Restaurant

Pavilion Garage on Second Street, between San Fernando and San Carlos Streets

Second & San Carlos Street Garage on Second and Third streets at San Carlos, next to Camera 3 Cinemas

Fourth and San Fernando Street Garage northeast corner of Fourth and San Fernando streets

This map is designed to help you with High Holy Day transportation and parking plans. More details, including passenger drop-off locations, will be included with your tickets (to be mailed two weeks before Rosh Hashanah).

If you have special parking needs, please contact the Temple office directly so that arrangements may be made.

Say "Chai" to New Members

As we approach the High Holy Days, many new families are experiencing Temple Emanu-El and finding it the place to make their Jewish home. To give our newest members an especially warm welcome, we are reinstating the practice of our Jewish gift baskets to be delivered to new members' homes.

The Membership Committee invites you to help us say "Chai to new members" by underwriting one or more of these baskets in increments of \$18. We will personally deliver our gift baskets starting around the High Holy Days and will continue throughout the year as more new members join. Many thanks to Michele Healey, who has started our efforts off with a generous donation. Please join her in welcoming all of our new families

Help the Membership Committee make the "Connection" to a new member:

- **Invite a friend** to participate with you in any of the services and activities offered by the temple. We are having a Prospective Member Wine and Cheese event at 7:00 PM, prior to the 8:00 PM service on Friday, September 19.
- **Save the date:** We will be honoring our new members at a Shabbat service on Friday, November 21. Please join us on that date to give our new members a warm welcome.
- **Send the names of prospective members** to Shirley Lee via e-mail dan.shirleylee@sbcglobal.net or call the Temple office: (292-0939)
- **Become a part of the enthusiastic membership committee.** We welcome longtime and new members, men and women of all ages to help revitalize this most important part of our temple. Call me at 268-0926 if you are interested.

Shirley Lee, Membership Chair

"Behold how good it is when brethren dwell together!"

We welcome the following families who have joined our congregation in recent months:

Zvi and Ofra Arom (Daniel and Ayelet)
Cindy Brown
Heather and Victor Conchado (Seth)
Kirk and Rebecca Everett
Michael Frankel and Laila Craveiro (Eli and Max)
Matthew and Lorraine Gabbert (Allison, Jonathan, Michael)
Scott and Denise Gordon (Eli and Abigail)
Andrew Gottlieb
Tamara Herman
Steven and Dena Horeff (Cale and Davis)
Jill Huchital (Ben Huchley)
Jimmy and Eileen Jue (Joshua Stephen)
Linda Kramer
Bobbi Lotman and Jonathan Lotman
Morton and Marion Malkofsky
Mark and Elina Rakhmievich (Emily and Sabrina)
Mike and Leslie Saviage (Alyssa and Katie)

From the Office

Thanks for your patience and understanding as we transitioned into the new fiscal year with our off-site accounting system. If you have any problems with your account, please do call the Temple office. We are making every effort to post all checks in a timely manner.

Please see the map on page 3 for details on public parking. More information will be included with your tickets. Remember that your account needs to be current through the first quarter in order for HHD tickets to be mailed.

We are excited about being under one roof for the High Holy Day services this year, and the office staff will do our best to ensure that it is a pleasant experience for everyone. Please look for the "comment" cards to give us your feedback.

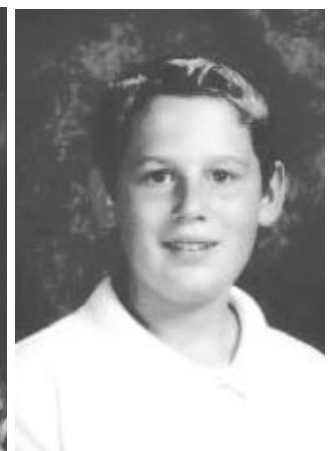
The office staff and I send New Year's Greetings to the entire Temple Emanu-El family.

MaryAnne Marceca

Bnai Mitzvah



Sarah Rose



Joseph (J.T.)

Sarah Rose Cappello will be called to the Torah as a Bat Mitzvah on Saturday, September 6, 2003. She is an eighth grade honor student at Miller Middle School and lives in Saratoga with her parents, Manny and Amy (Lax) Cappello and younger brother David. Sarah Rose loves to dance, listen to music, and spend time with friends and family. She studies piano and is a ranked junior tennis player in Northern California. Since young children have always held a special place in her heart, Sarah has chosen to make a contribution to the Make A Wish Foundation. Sharing her Bat Mitzvah Day with loved ones, both family and friends will be her greatest pleasure.

Joseph Salman-Tehrani (a.k.a. J.T.) will be called to the Torah on September 13, 2003. Joseph lives in San Jose with his family of seven. He attends Sylvandale Middle School and is in the 8th grade. He is a well-rounded intelligent teenager with a witty sense of humor. He spends most of his time on the basketball court or hanging out with his family and friends. Joseph is looking forward to sharing his special day with family from Los Angeles, Washington, Utah and Idaho, along with members from Temple Emanu-El.

From the Religious School

Opening Day: Sunday, September 14
No parking restrictions!

Come One, Come All
Park Anywhere, Have a Ball!

On Sunday, September 14th, bring your empty tummies, and thirsty minds, to our Opening Day of Hebrew and Religious School. Here's the plan:

- **8:00 AM** – Brotherhood will be preparing a luscious breakfast. Donations are always appreciated.
- **8:45 AM** – Hebrew students report to their assigned classrooms to meet and greet their classmates.
- **10:00 AM** – Religious School begins. Come and enjoy our Opening Day Assembly, meet your child's teachers, and join the annual Parent Get-Together, designed for schmoozing and information gathering.

If you haven't yet enrolled your child for school, please contact the Religious School Office immediately (408-292-3223). As we continue our preparations for Opening Day, our enrollment figures must be as accurate as possible. If it is more convenient to register your child on Opening Day, please bring all of your materials with you at that time. Please note, however, that a \$36 Registration Fee will be assessed at that time.

We look forward to seeing all of your smiling faces return on Sunday, September 14th. On behalf of all of the teachers and staff, we wish everyone a very healthy and happy New Year.

L'Shana Tova
Paula Marsh, Principal

Wednesday, September 17

4:00 PM First Wednesday Hebrew Classes

4:00 PM First B'nai Mitzvah Class with Rabbi

6:00 PM Opening Night of Teen Jewish Studies

Parent/Teen Dinner followed by TJS/Confirmation classes for students and presentation/discussion for parents

WANTED: Artist to complete the mural of Noah's Ark (the design is already drawn). We can supply paint. If interested, contact Barbara, 293-8660.

Preschool Notes

"Summer". That word can usually bring a smile or a warm memory to most people. Summers spent on vacations, at the beach, family picnics, swimming with friends, bar-be-ques, hide and go seek, staying up late, sleeping in, or camping (even in your own backyard) are some of the best reasons to be a kid.

Webster's dictionary defines summer as:

1. Usually the warmest season of the year, occurring between spring and autumn and constituting June, July, and August in the Northern Hemisphere, or, as calculated astronomically, extending from the summer solstice to the autumnal equinox.
2. A period of fruition, fulfillment, happiness, or beauty.

I prefer definition 2. Summer is a time for happiness and rejuvenation. As a child and now as an adult I always look forward to summer and going camping! So here is what I did over my summer vacation. I took my 2 sons, Chris and Zander, and headed to Pincrest, early in the morning, van packed full. No cell phones, no TV, no computers, no video games.

We spent the time doing the unthinkable--we talked, played board games, read, hiked, swam and they fished. (I am only willing to do so much!!!)

We had amazing quality time not only together, but more importantly, alone. Those afternoons, where I was reading, Chris was swimming and Zander was digging, had to be the best. During those few days I found me again, as an adult, a mom and as a preschool Director. All the energy that has been sapped out throughout the year dealing with typical preschool stuff and mom stuff seems to have just magically reappeared! The energy is back, I feel fresh and suddenly the world is mine again.

My kids seemed to find themselves again. They were able to put aside the reality that school is just around the corner and our crazy running around life slowed down so that they too were able to breathe. The biggest question was do we swim first or hike first? What a tough world we were in!

It is nice to be able to just slow down and be together. So as we enter the school year, I think sometimes we need to step back and make sure that we do not lose who we and who the kids are when we get caught up in the whirlwind of school, fundraisers, sports, scouts, music lessons, dance, playdates, etc.

L'Shana Tova,
Barbara

Baja Fresh Preschool Fundraiser

September 23, 2003

Tuesday, 4 - 9 PM

1976 S. Bascom Ave. Campbell CA

(408)377-2600

When you bring this coupon Temple Emanu-El Preschool will get 15% of the proceeds!

Women of Temple Emanu-El

Bernice Gaon, Bette Myers, Eva Stanley, Janis Decker, Sue Maltiel and I were fortunate to attend the Western Federation of Temple Sisterhood's Summer Institute in Sacramento, CA. The setting was the beautiful Congregation B'nai Israel. Witnessing their recovery after being fire bombed in 1999 was heart warming, especially since their Sisterhood and WFTS played a major role in the process. We studied together, celebrated Havdalah, listened to speakers, shared ideas. It was a great experience!

We ended a busy summer with our WOTE Shabbat on August 22. Members from WOTE led congregants in this beautiful summer patio service followed by a festive Oneg Shabbat. Thank you, Judith Stubbs for arranging this annual event.

We will be beginning fall with a trip to see the ever-popular show, **Funny Girl**. We are holding tickets in the "A" Section of the Center for Performing Arts and will sell them for \$65 (\$2 less than retail price). The show is scheduled for September 14 at 6:30 PM. We are hoping those attending will join us for a no host dinner at the Spaghetti Factory before the show. For more information and to purchase your ticket contact Janis at 281-2451 or email her at Janislpd@aol.com or Eva at 265-8523. (The Center for Performing Arts is light rail friendly – the train stops in front of the theater).

Our book club will begin with a book signing on October 12. Please see the article written by Nora Rousso for more information.

WOTE will be selling Gift Check books on the first day of Religious School. Proceeds from this sale will directly benefit the Religious School Students and Teachers. Look for the Gift Check table. Books sell for \$10. They will also be available in the Gift Shop after September 14.

Check out the Judaica Shop for new merchandise, which comes in weekly. We carry a large varied assortment of B'nai Mitzvah needs, including engraved invitations PLUS gifts for weddings and other occasions. Shofars are available in time for the New Year and we carry a large assortment of New Year cards at reasonable prices. Don't forget to register your children there for B'nai Mitzvah gifts. Profits from the Judaica Shop help support WOTE, and WOTE helps support our Temple.

November 16 – Save the date for our Paid Up Membership Luncheon.

Look on-line for upcoming WOTE events at <http://www.geocities.com/wote2001/> or visit our calendar at <http://calendar.yahoo.com/wote2001>
It looks like it's going to be another happening year!

Anita Medeiros
WOTE President

Temple Emanu-El Judaica Shop

Open Sundays when Religious School is in session, Fridays after motzi and by appointment (Peggy Frederick @ 354-1084). Your purchases support WOTE, which supports Temple Emanu-El.

SAN JOSE JEWISH FILM FESTIVAL 2003

**SAVE THESE DATES:
OCTOBER 22nd - NOVEMBER 23rd**

**Patron Event - Wednesday, October 15th
Teen Screening - Tuesday, October 21st**

Showings on Wednesday evenings at 7:30 p.m. and Sundays at 3:00 pm.

One time only showings at 5:30 p.m. on Sundays

GenX Features - Saturday, November 9th at 10:00 p.m. and Sunday, November 16th at 7:30 p.m.

Family presentation - Sunday, November 23rd at 1:00 p.m.
Israel Series - Sundays, November 9 & 23 at 7:30 p.m.

**For more info, check out the website:
www.sjfff.org or call (408) 358-5929**

Gloria Marchick, author of
"Shalom in My Heart, Salaam On My Lips: A Jewish Woman's Experience in Modern Morocco."

**Sunday, October 12
1:30 - 3:00 PM**

A reading and book-signing sponsored by WOTE

Marchick taught English to Arab university freshmen in Morocco in 2000, as a Fulbright scholar. The book describes how difficult it was to love and care for the people she lived with on one hand, but be unable to share her soul with them on the other, and is an out-growth of her e-mail correspondence with friends and family during that time.

Copies of the book will be available in the Judaica Shop and also on October 12.

Lunch is available at 12:15 PM (\$3 for non-WOTE members/\$2 for members) with the Sunday Lunch Bunch. RSVP for lunch or just the talk to Sue Maltiel (725-1106 or suemaltiel@comcast.net).

Brotherhood: Staying Connected

As we approach the High Holidays, I am reminded of all the familiar faces I look forward to seeing at Temple Emanu-El. It's a time when we as a congregation come together more than at any other time. We see people that we usually see occasionally on Shabbat, we see people that attend Board Meetings or committee meetings or Brotherhood events. We see people that we see on most Sundays during the school year, and we see people that we haven't seen for a long time. This year, I have great expectations that the experience will be enhanced as we gather for the High Holiday services all together as one congregation at the Civic Auditorium.

Over the years, Brotherhood has taken a leadership role in High Holiday services, especially as ushers, ticket checkers, and greeters (and more recently as security personnel). The faces may slowly change with time, but the tradition remains intact. This year, if you see an usher with an unfamiliar face, please introduce yourself. You will probably be meeting one of the newer members or officers of Temple Emanu-El Brotherhood.

Brotherhood performs many functions and services during the year, and this year, with new leadership, there will be many of the traditional Brotherhood events such as the Annual Blood Drive, the distribution of Shoah candles, a Brotherhood Shabbat, first day of Religious School Welcome Back Pancake Breakfast (September 14 this year), Latkes for Chanukah (and several other cooking opportunities), and of course the various sponsorships and support of our Temple Youth. We also will be leading the renovation, transportation, and conservation of a stage-worthy Bimah for the High Holidays.

So remember the Brotherhood of Temple Emanu-El for all of the above, but also for men's issues, such as health, spirituality, involvement with community, and social functions. Join Brotherhood, if you are not already a member. Dues forms will be in the mail soon, or call the Temple office.

Come to our meetings, look for upcoming events, and volunteer to help or participate. Brotherhood meets the second Sunday of the month, 10:00 AM at the Temple. We hope to see you.

Uri Gottfeld
Temple Emanu-El Brotherhood

BROTHERHOOD would like to extend a BIG Thank You to **Jonathan Hirshon** for organizing and presenting the first in a series of lectures on "*Jews of the World*". The August 13 presentation was on the Jews of Spain, accompanied by a Sephardic dinner of paella, olives, sangria and cheesecake for dessert.

We would also like to thank **Laura and Dan Winter, Paula Marsh and Harold Welch, Diane Hirshon** and everyone else who stepped in to help out. Without your assistance, this event would not have been such a success! We look forward to the next talk and more delicious fare.

- Jeff Marsh, Brotherhood Co-President

In the Community

Kehillah Jewish High School Community Information Night

Thursday, September 18 at 7:30 PM

In the Library
3800 Blackford Avenue
San Jose CA 95117
(408)984-3600
www.KehillahHigh.org

Peninsula WalkFest 2003: Walk in Support of Israeli Victims of Terror and then visit the "To Life! Jewish Cultural Street Festival"

Sunday, Sept. 21, 2003; 9:00AM-11:00AM

Location: Walkathon will start and finish at the parking lot of CineArts Theater in Palo Alto Square (Page Mill and El Camino). The distance of the walk will be 5-7 km. After the walkathon, visit the Street Festival, which will be located two short blocks away.

(Since Religious School families will be unable to participate in the WalkFest, please consider making a donation, or collecting pledges as a "virtual walker." These are also good options if you are unable to participate for other reasons. Donations should be sent to: WalkFest 2003 c/o Temple Beth Jacob, 1550 Alameda de las Pulgas, Redwood City CA 94061.)

Additional pledge forms are available in the Temple office.

TO LIFE!
Jewish Cultural Street Festival

Sunday, September 21
10 AM - 6 PM

California Street off El Camino Real, Palo Alto
Food, exhibits, craftspeople,
entertainment and more!
www.ToLifeFestival.org

MISSING:

Silver Metal Eyeglass Case with prescription glasses inside (black frames) Possibly left at Temple on a Friday night. If you have seen them, please contact Paula in the Religious School office, 292-3223.

Emanu-El 49ers

A group for Jewish singles (49+)

Wednesday, September 24, 5:30 PM

We'll celebrate 6 years of friendship and connection with dinner at the Crowne Plaza Cabana in Palo Alto. \$12.50 total for early bird specials. RSVP to Sol (650-348-7092) by September 21.

Sunday, October 12, 2:00 PM

Wine & Cheese and More at Chai House, 814 St. Elizabeth Drive. Juice & soda available for non-wine drinkers. Call the office if you'd like a complete listing of upcoming 49er events.

It's ENTERTAINMENT BOOK time again!

Still only \$20. Temple Emanu-El gets \$6 for every book sold. Pick up one for your family, and others as gifts! Available on the First Day of Religious School, in the Gift Shop, and the Temple Office. For special orders (out of town books, etc.) contact Burt Epstein, 268-2721 or sandyandburt@aol.com

eScrip: Remember in September

We now have 120 supporters eating and shopping for Temple. THANKYOU! In June we held an incentive drawing to thank one long-time, and one new supporter. The winners were Kathryn Zwern and Diane Hirshon. Last year we earned over \$2600. Let's double that for 2003!

Remember to always swipe your registered grocery club cards and credit/debit cards. Be assured that eScrip does not share any of your personal or credit information. One of our tech-savvy congregants has read eScrip's privacy policy to verify this.

This just in! Safeway is updating their CLUB CARD records. Soon all our loyal supporters will be asked by eScrip to reconfirm their CLUB CARD numbers, either online or by mail.

Register online at www.escrip.com or call Lorie Kaplan, 408-267-4563, for a mail-in form or more information.

Donations

Rabbi's Discretionary Fund

In Memory of Joseph L. Nathan
Ellen C. Lee
In Honor of Nella Hoffman's Special Birthday
Jay & Dorothy Frankel
In Memory of Claire Rosenberg
Sidney & Doris Rosenberg
In Honor of Dr. & Mrs. Arthur Messinger's
50th Anniversary
Mr. & Mrs. Robert Pollack
Jay & Dorothy Frankel
In Memory of Eva Leve
In Memory of Maxwell Bloom
Wanda & Bob Pollack
In Memory of Minnie & Louis Lepler
Gertrude Lepler
In Honor of Joshua Wolf-Bloom's Bris
David & Michelle Wolf-Bloom
In Appreciation of Rabbi Magat
Willow Glen Funeral Chapel
In Honor of Ethel Ress's Birthday
Leslie & Arnold Ress
In Memory of Irving Weinstock
Stewart & Brenda Weinstock
In Memory of Mark Siegel
Arthur & Marilyn Silver
In Memory of Sidney J. Gambord
In Memory of Sanford Ziegler
Bob & Wanda Pollack
In Memory of Dr. Messinger's Mother
Mr. & Mrs. Julian Forster
In Honor of our 25th Anniversary
Bob & Maggie Newman
Donation
Francine Shapiro

General Fund

In Memory of Emmy Lou Levin
Mr. & Mrs. Richard Ziegler
Mr. & Mrs. Brian Fox
In Memory of Maxwell Bloom
Mr. & Mrs. John Marceca
Mr. & Mrs. Richard Ziegler
Mr. & Mrs. Mort Leiter
Art & Phyllis Messinger
Sally Ravel & Bernard Axelrad
Ruth Reischer & Family
Get Well Wishes to David Hirsch
Marcia & Joe Riggio
For A Speedy Recovery of Esther Reiser
For A Speedy Recovery of Joan Poor
Burt & Sandy Epstein
In Memory of Isidor Farber
In Memory of Mickey Penner
Michael & Millie Sprintz
In Memory of Edith Stein Kovnat & Betty
Lichtenstein
Frances Powell & Family
In Memory of Gussie Hirsch
Mildred Wolfson
In Memory of Dr. Solomon S. Sogg
Richard Sogg
In Memory of Thresa Messinger
Marvin & Joan Fox
Nella Hoffman
Bob & Ruth Krandel
In Memory of Dora Fischer
Mildred Wolfson
In Appreciation of Deborah Zimmer
Doris Vela-Osias
Temple Emanu-El 49ers

In Memory of Allen A. Siegel
Judith A. Siegel
In Memory of Morris Hirsch
Marcia & Harry Ratner
In Memory of Mae Citron Gordon
Elsa Gordon
In Memory of Esther Weiner
In Memory of Ruth E. Jeffe
Robert & JoAnne Hersch
In Memory of Rose Goldstein & Abe Seldon
Martin & Rita Seldon
In Memory of Rivka Marshalkowicz
Henia Burman & Family
In Memory of Sanford Ziegler
Ruth Reischer
Mr. & Mrs. Mort Leiter
Art & Phyllis Messinger
In Memory of Irving Levy
Sally Ravel & Bernard Axelrad
For a Speedy Recovery of Ruth Cahn
Dr. Edward & Marjorie Cahn
For a Speedy Recovery of Ruth Krandel
Dr. Edward & Marjorie Cahn
Bob & Carol Tessler
Steve & Arlene Greenberg
Dan & Shirley Lee
For a Speedy Recovery of Wayne Rose
Steve & Arlene Greenberg
Burt & Sandy Epstein
In Honor of our Granddaughter Sarah Rose
Cappello's Naming
Hal & Jane Lax
For a Speedy Recovery of Sheri Prizant
Dr. Edward & Marjorie Cahn
Marvin & Joan Fox

In Memory of Sidney Greenberg
Stephen & Arlene Greenberg
In Memory of Martha Rachel Spinner Levine
Henry & Jean Richards
In Memory of Philip Shapiro
Steven & Noreen Shapiro
In Memory of Larry Chatoff
Jack Chatoff
In Honor of Nella Hoffman's 75th Birthday
Dr. Joe & Armeda Fischer
Ceil S. Weinstein
In Memory of Mickey & Sam Penner
Herm & Beryl Greenberg
Al and Louis Greenberg
Millie & Mike Sprintz
In Honor of Ray Levine's Birthday
Dan & Shirley Lee
In Memory of Aaron Ress
Mrs. Elvin Ress
In Memory of Jean Reiter, Zelma & Louis
Friedman
Diane & Emery Fabri
In Memory of Leon Grodnitzky
Gussie Goldman
For Speedy Recovery of Bob & Ruth Krandel
Lori & Diels Ziegler
In Memory of Betty Gordon
Joseph & Marcia Riggio
In Memory of Siegmund Mendel
Eric & Joyce Mendel
In Appreciation of Wayne Rose
Sydney Levin
In Honor of Sam Mintzer's 80th Birthday
Jerry & Gail Jacobs
In Honor of Joanne's Birthday
Henry & Sandra Stein
In Honor of Dr. Arthur & Phyllis Messingers's
50th Anniversary
Henry & Sandra Stein
Rhoda & Saul Goldstone
Sydney Levin
Rubin & Lucy Wargon
In Memory of Herman Greenberg
Al & Louise Greenberg
In Memory of Anita Sommer
Melvin & Sybil Sommer
In Memory of Irving Stein
Judith & Arthur Stein
In Memory of Michael Goodman
Margie Goodman
In Memory of Bessie Pollack
Robert S. Pollack
Donation
Henry and Debra Watkins
Tom & Bonnie Marantette

JoAnne Salman-Tehrani Homeless Fund

In Memory of Maxwell Bloom
Charles F. Atlas
Mimi Bloom
In Memory of Dora Kaisel, Stanly Kaisel &
Anna Becker
Maggie Cant
For the InnVision Program
Emanu-El 49ers
For A Speedy Recovery to Wayne Rose
Millie Segal
In Honor of 50th Anniversary of Amalia &
Ludwig Arndt
Si & Bee Silin

Donation
Mildred Mintz
Irwin & Laura Jacobson

Betty Rinsler Religious School Fund

In Memory of Morris Rinsler
Leo Rinsler
For the Speedy Recovery of Leo Rinsler
For the Speedy Recovery of Esther Reiser
Selma Zinker
In Memory of Ben Woron
Mark & Bette Emanuel
In Honor of Nella Hoffman's 75th Birthday
Pam & Jeff Hoffman
In Memory of Max Sachs
Seema & Robert Jaffee

Campership Fund

In Memory of Ruth Rubin
Jacob & Pauline Braunstein
In Honor of Bruce Matzner's 70th Birthday
Arnold & Diane Simon
Henry & Carol Thailer

Beverly Jordan Temple Beautification Fund

In Memory of Solomon Miller
Golda Miller
In Honor of Dr. Arthur & Phyllis Messinger
Mr. & Mrs. Fritz Gelb
In Honor of Nella Hoffman's Birthday
Phyllis & Art Messinger

Judith Jurman Omens Cemetery Beautification Fund

In Memory of Thresa Messinger
Melvin & Helen Grant
Aaron & Evelyn Berman
In Honor of our New Grandson, Aiden David
Jyl & David Jurman
In Memory of Leo Ivener & Sunny Sunshine
Jyl & David Jurman
In Honor of Harry Miller's 103rd Birthday
Charles F. Atlas
Get Well Wishes to Wayne Rose
Bob & Ruth Krandel
Joe & Edith Rosenberg
Joan & Marvin Fox
In Loving Memory of Sanford Ziegler
Mr. & Mrs. Charles Jacobs
In Loving Memory of Maxwell Bloom
Mr. & Mrs. Charles Jacobs
In Loving Memory of David Arick
Grace Freiberg
In Honor of Casey Alexa Shapiro's Bat Mitzvah
Francine Shapiro

Rabbi's Housing Fund

In Memory of Rose & Abe Litofo
In Honor of our son Rich's Engagement
Ginny & Manny Siegler

Shank-Rockman Family Sound System Fund

In Honor of the Birth of Sofie Mara Seitel
Best Wishes for a Speedy Recovery to Ruth
Krandel
Mary & David Rockman
In Honor of the Birth of Sofie Seitel
Morton & Marilyn Leiter
In Memory of Helen & Bert Gates
Joann Shank

Phyllis Omel Junior Choir Fund

In Honor of Dr. & Mrs. Arthur Messinger's
50th Anniversary
In Memory of Jeanette Waxman
In Memory of Thresa Messinger
Marilyn & Gene Handloff

Choir Fund

In Memory of Leon Gordon
Elsa Gordon
Donation
Laura Sternberg
In Memory of Naomi Mayer
Margaret Cant

Cantorial Discretionary Fund

In Honor of the Pianist at the Bloom Funeral
Mimi Bloom
Donation
Barton Dafoe
In Honor of Josh's Bar Mitzvah
Jeffrey & Michele Marsh

Religious School Fund

Thank you, Laura Danoff for Chairing the
Religious School Board
Religious School Board
In Memory of Esther Weiner
In Memory Of Robert Leiter
Morton Leiter
In Memory of Rose Preis
Herb & Rena Preis
In Memory of Phyllis Matzner
Bruce & Helen Matzner
In Memory of Alton Atkinson
Bicknell Family
In Memory of Fanny Emanuel
Mark & Bette Emanuel
In Memory of Charles Galin
Clayton Feldman
In Memory of Sam Fishoff
Robert & Rhonda Hansen

Harold Cahn Prayerbook Fund

Get Well Wishes to Ruth Cahn
Marvin & Joan Fox
In Memory of Ann Orloff Cahn
Marjorie Cahn
In Memory of JoAnn Astrahan
Betty C. Yules
In Memory of Helen Powell
Hannah Anderson
In Memory of Den Teitilbaum
Myra Reinhard

Prayerbook Tribute Fund

In Memory of Simon Zwern
Arthur & Kathryn Zwern
In Memory of Sandy Ziegler
In Memory of Thresa Messinger
Dr. & Mrs. Lawrence Ross

Alvin Ravel Garden Fund

In Memory of Sam Fishoff
Robert & Rhonda Hansen
In Memory of Herbert Ravel
Sally Ravel
Arlene Ravel

Phyllis Matzner Campership Fund

In Honor of Bruce Matzner's 70th Birthday
Melvin Sommer

SUNDAY	MONDAY	TUESDAY	WEDNESDAY	THURSDAY	FRIDAY	SATURDAY
	1 Labor Day Temple office closed Preschool closed	2 6:00 PM Exec Committee (BFR) 7:30 PM Board Meeting (BFR) 7:30 PM Choir Rehearsal (Sanc)	3	4 7:00 - 8:30 PM Adult Ed: "An Introduction to the High Holy Days"	5 8:00 PM Erev Shabbat Service	6 9:00 AM Shabbat morning minyan 10:30 AM Bat Mitzvah of Sarah Rose Capello
7	8	9 7:30 PM Choir Rehearsal (BFR)	10 Noon Lunch & Learn	11 7:00 - 8:30 PM Adult Ed: "An Introduction to the High Holy Days"	12 7:15 PM Erev Shabbat Family Service	13 9:00 AM Shabbat Morning Minyan 10:30 AM Bar Mitzvah of Joseph Salman-Tehrani
14 FIRST DAY OF SCHOOL 8:00 AM Pancake Bkfst 8:45 AM Hebrew 10:00 AM Religious School	15	16 6:00 PM Ritual Comm Mtg 7:30 PM Choir Rehearsal	17 Noon Lunch & Learn Torah Study 4:00 PM Hebrew School 6:00 PM Teen Jewish Studies	18 7:00 - 8:30 PM Adult Ed: "An Introduction to the High Holy Days"	19 6:30 PM Tot Shabbat 7:00 PM Prospective Member Wine & Cheese Social 8:00 PM Erev Shabbat (Installation)	20 9 AM Shabbat Morning Minyan 7:00 PM Selichot Study Session 8:00 PM Selichot Reception 9:00 PM Selichot Service (Sanc.)
21 8:45 AM Hebrew 9:30 AM Rel Scthl Board 10:00 AM Rel School 1:00 PM Kever Avot Service (Oak Hill)	22 6:30 PM WOTE Meeting (Anita Medeiros' home)	23 4:00 - 9:00 PM Preschool Fundraiser Baja Fresh (Campbell Ave & Bascom) (bring coupon) 7:30 PM Choir Rehearsal	24 4:00 PM Hebrew School 6:00 PM Teen Jewish Studies 5:30 PM Emanu-El 49ers Dine Out	25	26 Erev Rosh Hashanah Preschool and Temple office close at noon 6:00 PM Erev Rosh Hashanah Children's Service 8:00 PM Erev Rosh Hashanah Service	27 Rosh Hashanah 9:00 AM Study 9:30 AM Rosh Hashanah Morning Svc 11:30 AM Family Alt Service 5:00 PM Tashlich (Oak Meadow Pk. Los Gatos)
28 NO HEBREW OR RELIGIOUS SCHOOL	29	30 7:30 PM Choir Rehearsal (BFR)				

Mazel Tov

To Kelly and Eric Snider, on the birth of their son, Jonah Daniel (August 8)
 To Stacey and Rick Zis, on the birth of their son, Samuel Andrew (August 6)
 To Charles Atlas, on the birth of his first great-grandchild,
 Elizabeth Grace Pena, daughter of Lauren and Omar Pena of San Jose (August 7). Grandparents are Mark and Clifta Atlas of Willits.
 Twice to Selma Zinker: On the marriage of her daughter Bobbie to Warren Robinson on June 20th; and on the engagement of her daughter, Julie to Val Aguiniga (a May 2004 wedding is planned).

We note with sorrow the passing of

Emmy Lou Levin	Craig Karnal, cousin of Larry Hirsch
Hannah Hoffman, aunt of Ginny Hoffman	Max Simans, uncle of Nancy Gerston
Lucille Aronoff, mother of Michael Aronoff	Peter Saltman, step-father of Sandra Rosenberg
Milton Adler, grandfather of Jill Huchital	Doretta Given, grandmother of Curtis Given
Belle Gendler, mother of Paul Gendler	Shirley Shain, mother Jay Shain
Maxwell Bloom, husband of Mimi Bloom	William Schwartz, husband of Blanche Schwartz, father of David Schwartz
JoAnn Astrahan, former Temple member, and member of WOTE	Thresa Messinger, mother of Arthur Messinger
Ethel Lindauer, grandmother of Randy Levinson	Lottie Berman, mother of Elaine Flynn
Rochelle Mendoza, sister-in-law of Ann Roque	George Rosen, husband of Peggy Rosen Rosalind Mann

Yahrzeits

SEPT 5

Pam Allison, Philip G. Berkowitz, Margaret Brammer, Jack Cherkasky, Edward Fox, Evelyn Fox, Anna Frankel, Sarah Friedman, Morris Heller, Isadore Koltun, Etta Krohn, Joel Landau, Sonia Meyer, Fred Paul Miller, Michael Olkin, Jack Leon Passovoy, Elaine Purwin, Ann Richman, Winnie Schare, Sol Schneiderman, Sidney Shapiro, Lena Kasner Silverman, Amy Swartz, Henry Tucker, Shari Unger, Bliema "Billie" Walters, Francis James Wank, Feige Weinreb, Morton Weinstein, Adolph Ziegler, Robert Earl Zollars

SEPT 12

Ruby Barnett, Naftali Behar, Morris Chassen, Gladys Cherkasky, Morton Jerome Citron, Susman Cohen, Abraham Freiberg, Leonard Gaon, Evelyn Goer, Yetta Gold, Arthur Goldberg, Lev Goldin, Jennie Greenberg, Lillian Hermelin, Ron Hoffman, Judi Jurman Omens, David Meyer Katz, Gerald Kotlier, Clementine May, Rose May, Samuel Miller, Joshua Milman, William Minkin, Ida Mintz, Jeffrey Nadler, Ida Ofsaiof, Judith Lynn Jurman Omens, Heather Shanas, Fran Shussett, Arthur Silverman, Fanny Stein, Philip Taitelman, Maury Wasserman, Louis Wolfson

SEPT 19

Morris Altman, Rebecca Borts, Mildred Brenner, Elaine Levin Cobb, Elaine Levin Cobb, Nathaniel Davis, Carolyn Fearn, Benjamin Gabrilowitz, Adda Gerstel, Dorothy Golding, William Grant, Ceal Harvey, Leo Herscher, Eli Hurwitz, Sarah Kaplan, Rose Koster, Herbert Matties, Irene R. Miller, Frank Neves, Mary Pintoff, Yetta Polansky, Clara Poley, Elvin Ress, Carl Reynolds, Daniel G. Rose, Ruthe Rosenberg, Michael Rudin, Mike Rudin, Marie Rusnak, Diane Schneider, Fanny Schonwetter, Paula Senigaglia, Rose Steinberg, Dorothy Unell, Edna Weiser Weinstock, Marilyn Wexler, Helaine Wiesner, Mae S. Wilets

SEPT 25

Jay Andelman, Anna Block, Ted Blumberg, Jules Brand, Abraham Cherkasky, Bernice Noble Cohen, Charles Cooper, Peggy Dinneen, Bertha Doblin, Eva Emanuel, Benjamin J. Fadem, Leah Haas Frank, Eva Fredkin, Victor Ganz, Jennie Gold, Paul Greebler, Helen Greenberg, Bessie Horwitz, Samuel Jacobs, Celia Pransky, Kadis Aaron Katzman, Charles Kipniss, Eli Kostant, Evelyn Hammer Loth, Rene Marxheimer, Lee Jacob May, Sue Godet Noble, Chris Ranes, Gerald Rosen, Bessie Rosenberg, Augusta Kaskell Rothholz, Peggy Schoenfeld, Hy Sokol, Julius Sommer, Alfred Stoer, Caroline Cohn Stoer, Fritz Israel Stoer, Marion Wallace, Anna Wechsler, Isidore Wechsler, Louis Weiner, Helaine Weisner, Else Wolff, Ralph Woods

Temple Emanu-El

1010 University Avenue
 San Jose, CA 95126-1898
 Telephone: (408) 292-0939
 Fax: (408) 292-7625
 www.templestanjose.org

Connections is published 10 times a year by Temple Emanu-El

Dana L. Magat Rabbi
 Joseph Gitin, D.D. Rabbi Emeritus
 Rachel Michelberg Cantorial Soloist
 Wayne Rose Cemetery Administrator
 Mary Anne Marceca Office Manager
 Barbara Smead Preschool Director
 Paula Marsh..Religious School Principal
 Deborah Zimmer Member Services Coordinator

Officers

Stephen Greenberg President
 Laura Danoff Vice President
 Jean Richards Vice President
 Dan Winter Vice President
 Bruce Frederick Secretary
 Dan Lee Treasurer
 Barry Cohen Past President

Trustees

Mort Berlant	Lori Kohler
Dr. Michael Cahn	Nora Rouso
Burt Epstein	JoAnn Shank
Larry Hirsch	Dr. Richard Sogg
Jonathan Hirshon	Sybil Sommer

Auxiliary Presidents

Anita Medeiros.....WOTE
 Jeff Marsh/Harold Welch/Uri Gottfeld
Brotherhood
 Claire Barnhart.....XYZ
 Emilia Varshavsky/Billy Ravel.....
EMTY Senior Youth Group



Affiliated with the
 Union of American Hebrew Congregations

Temple Emanu-El Contribution Form

Enclosed please find \$ _____ as a donation to _____ Fund.

Given in honor of or in memory of: _____

Please send acknowledgement to:

Name _____

Address _____

City _____ State _____ Zip Code _____

Donor's Name _____

Address _____

City _____ State _____ Zip Code _____

*Please list additional
donations on a
separate sheet*

*Please make your
checks payable to
Temple Emanu-El*

*Contributions are tax
deductible*

Temple Emanu-El List of Funds

General Fund
Endowment Fund
Annual Maintenance Fund
Tribute Funds

(listed below by category in alphabetical order)

Memorial Funds:

Andrew Apte Temple Historical Fund
Lollie Brickner Media Center Fund
Harold Cahn Prayerbook Fund
Michael Elman Campership Fund
Milton Fox Campership Fund
Ralph Goldeen Library Fund
Kenneth Gordon Children's Prayerbook Fund
Beverly Jordan Temple Beautification Fund
Lou & Clara Juren Library Fund
Ida F. Kragen Consecration and Caring Fund

Herbert Marchick High Holy Day Fund
Phyllis Matzner Campership Fund
Phyllis Omel Jr. Choir Fund
Judith Jurman Omens Cemetery Beautification Fund
Alvin Ravel Garden Fund
Betty Rinsler Religious School Endowment Fund
JoAnne Salman-Tehrani Homeless Fund
Winnie Schare Interfaith Shabbat Fund
Maurice Tucker High Holy Day Music Fund

Other Tribute Funds:

Adult Education Fund
Bertram Berns Music Fund
Campership Fund
Cantorial Discretionary Fund
Caring Fund
Choir Fund
Facilities for the Aged Fund

Leonard and Bernice Gaon Campership Fund
Israel Scholarship Fund
Prayerbook Tribute Fund
Rabbi's Discretionary Fund
Rabbinic Housing Fund
Religious School Fund
Religious School Scholarship Fund
Shank-Rockman Sound System Fund
Sisterhood Remembrance Fund
Tzedakah Fund
Weintraub Religious School Scholarship Fund

Other Tribute Donations:
Memorial Plaque - \$600 each
Sanctuary Chair Plaque - \$400 each
Prayerbook Tribute - \$25 each



Temple Emanu-El
1010 University Avenue
San Jose, CA 95126
(408) 292-0939

Address Service Requested

Non-profit Org.
U.S. Postage
PAID
San Jose, CA
Permit No. 542

**TIME VALUE
DATED EVENTS**